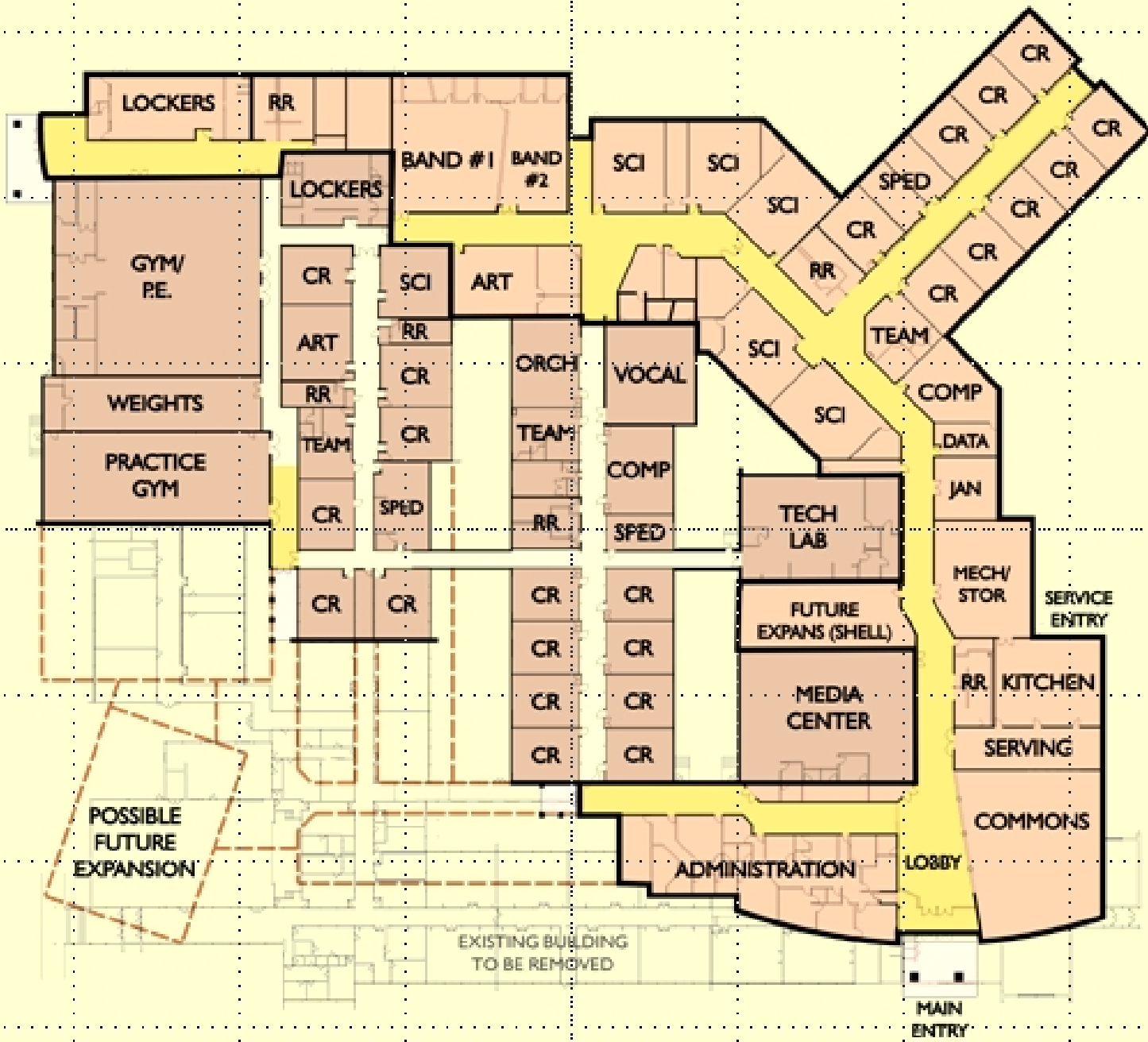


# Cherokee Middle School

SITE PLAN

SAPP DESIGN ASSOCIATES, P.C.





# Cherokee Middle School

FLOOR PLAN

SAPP DESIGN ASSOCIATES, P.C.





South Elevation

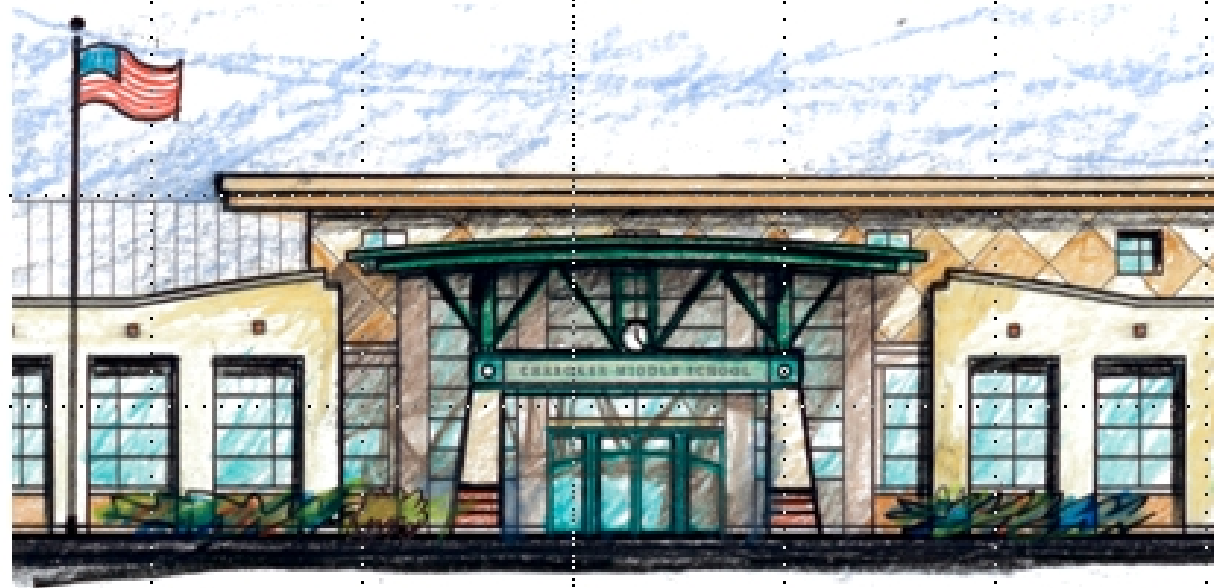
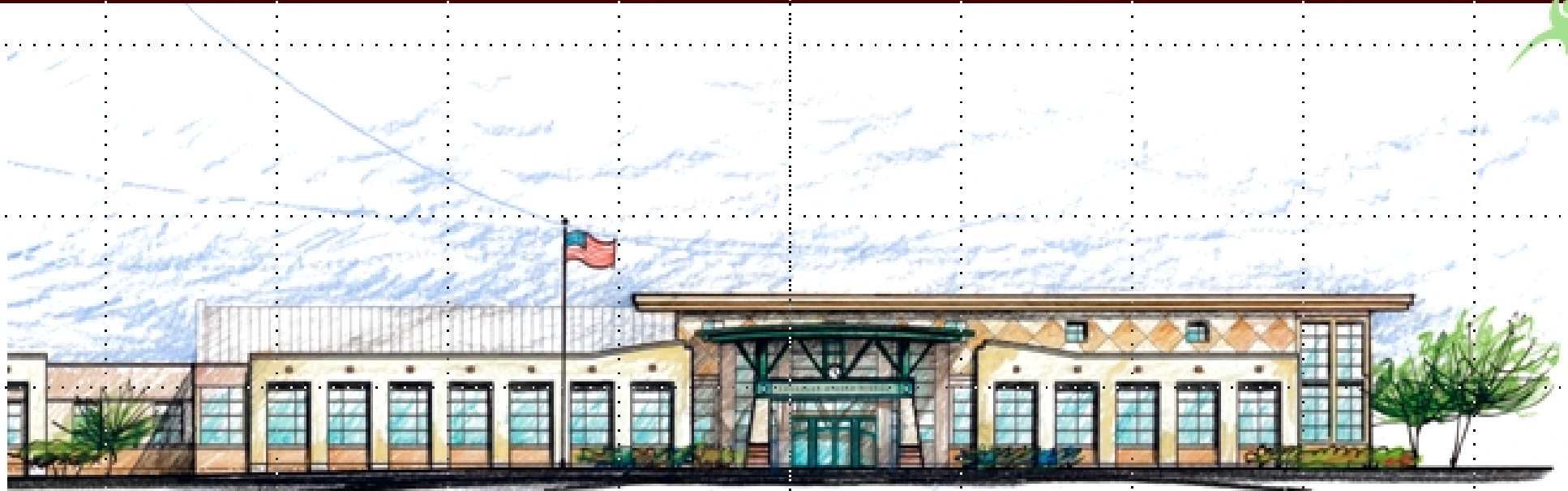


East Elevation



West Elevation





# Cherokee Middle School

ENLARGED ELEVATIONS

SAPP DESIGN ASSOCIATES, P.C.



# Cherokee Middle School

Architect: Sapp Design Associates  
Contractor: Flintco, Inc.



We are very excited to report, that after 2 ½ years of construction. We are implementing the final construction items at Cherokee Middle School. At the start of school, this year, we were able to place all of the new library furnishings, not only in the original project scope of the renovated portion of the library, but the expanded “infill” portion as well. Shortly, thereafter, the library computer answer was completed and fitted with new computers, just in time for testing. Since our last report, we have installed projectors in the 8<sup>th</sup> grade wing, one of the final details in that corridor, and completed a newly constructed corridor east of the “little” gym that now connects the athletic wing to this campus, allowing excellent continuity of travel throughout the entire building.

Four of the nine classrooms, in the 6<sup>th</sup> grade wing, were opened at the start of school; the remaining five classrooms were recently completed, receiving the excitement of the last piece of move-in by both staff and smiling students. Opened at the same time were the completely renovated and enlarged “little”/practice gym, the weight room and that wings teacher’s team and conference rooms.

Our roof and exterior progress was install the remaining RTU’s (roof top air units; yeah air conditioning), building envelope and flashing closures, and final top soil grading/seeding at the southwest corner of Cherokee’s campus, as well at the two new combined football/soccer fields. Project punch list pursuit and contract closing procedures will occur over the next couple of months.