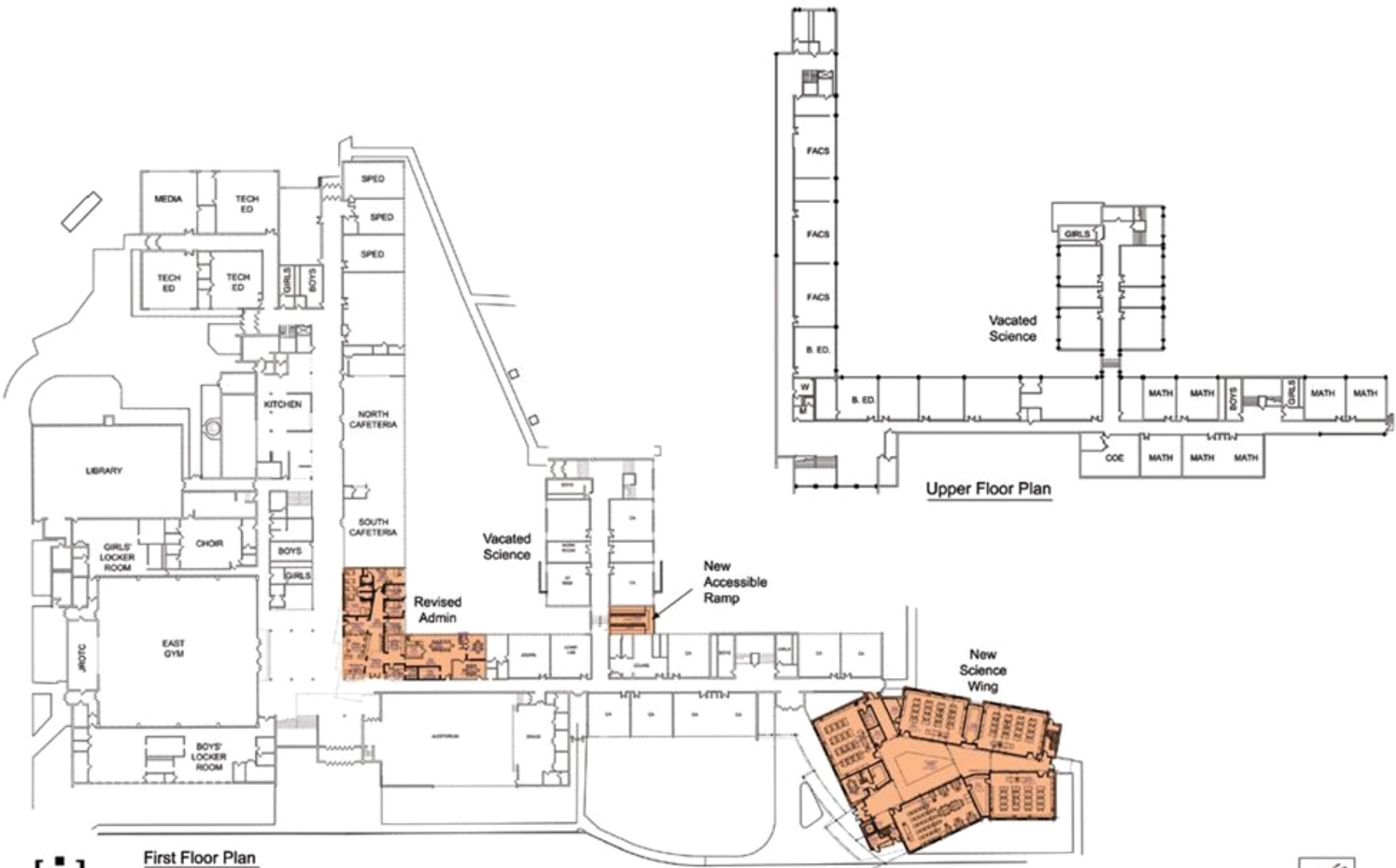




bond
WOLFE

Springfield Public School
HILLCREST HIGH SCHOOL





First Floor Plan

Upper Floor Plan

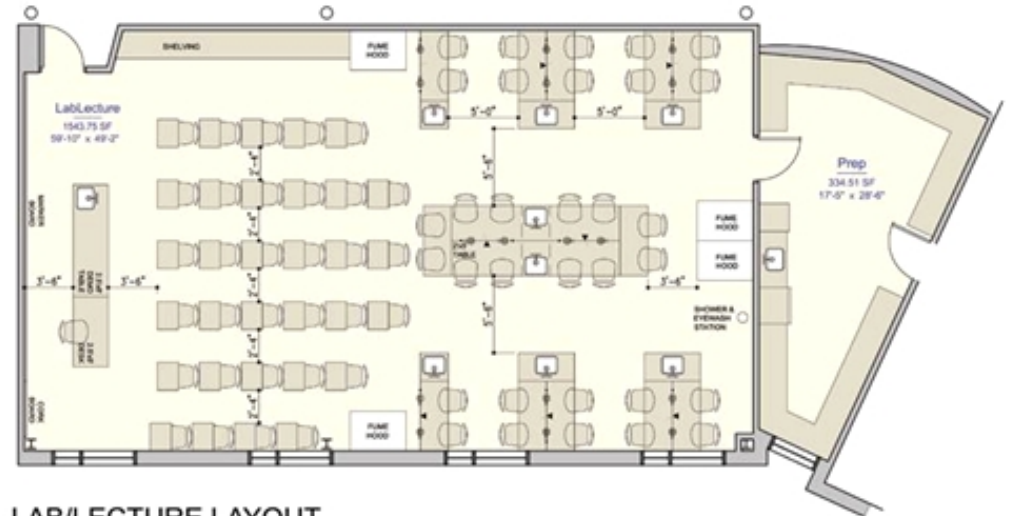


Springfield Public School
HILLCREST HIGH SCHOOL

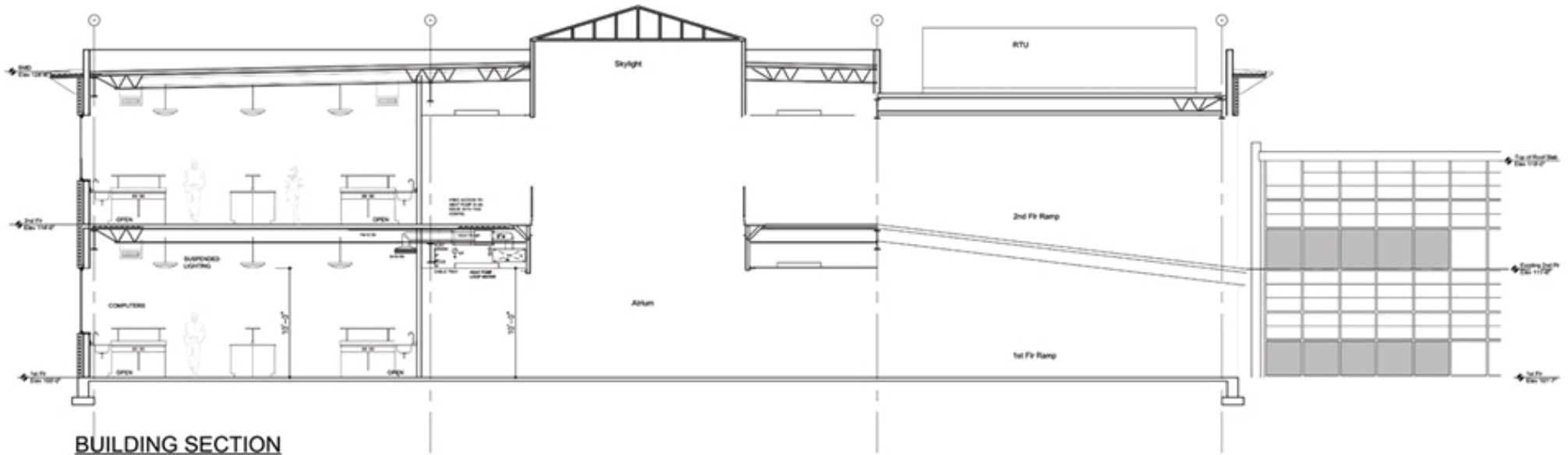




LAB LAYOUT



LAB/LECTURE LAYOUT

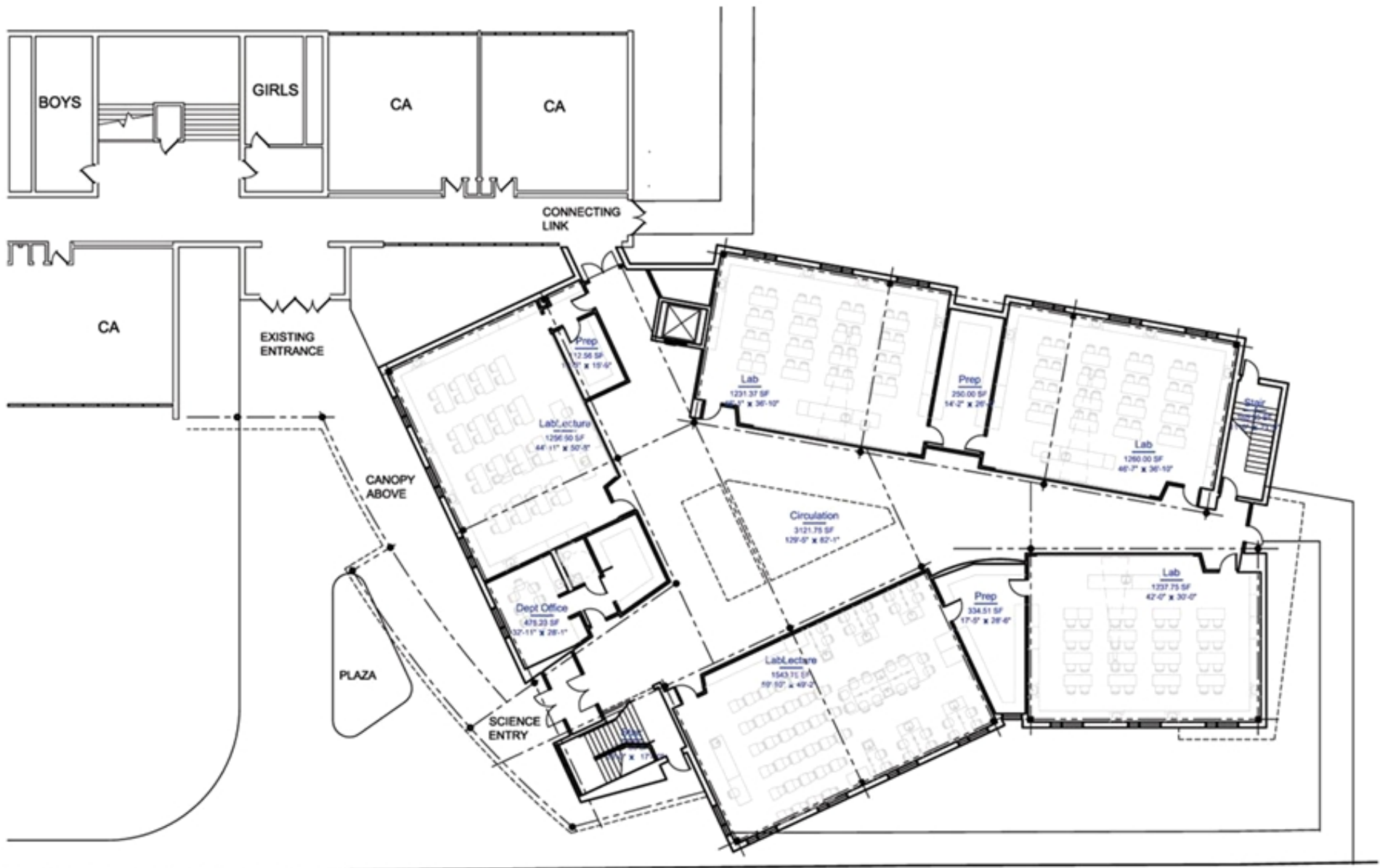


BUILDING SECTION



Springfield Public School
HILLCREST HIGH SCHOOL





First Floor Plan





2ND FLOOR PLAN

Springfield Public School
HILLCREST HIGH SCHOOL





WEST ELEVATION



SOUTH ELEVATION



Springfield Public School
HILLCREST HIGH SCHOOL



Hillcrest High School

Architects: Bond Wolfe Architects

Contractor: Branco Enterprises, Inc.



Project:

Hillcrest High School Science Wing Addition includes ten science labs and five teacher's prep rooms. The central core features a floor opening overlooked by a clerestory above for non-traditional classroom setting. The new elevator will provide ADA access and transporting books and furniture to the second floor. This project also includes renovation to seven science rooms, three art classes, media and robotics classrooms and the administration areas. The new construction square footage is: 25,745

Construction Progress Breakdown:

- | | |
|----------------------|------|
| ▪ Footing/Foundation | 100% |
| ▪ Shell/Dried in | 100% |
| ▪ MEP | 100% |
| ▪ Finish Work | 100% |
| ▪ Renovation Work | 100% |