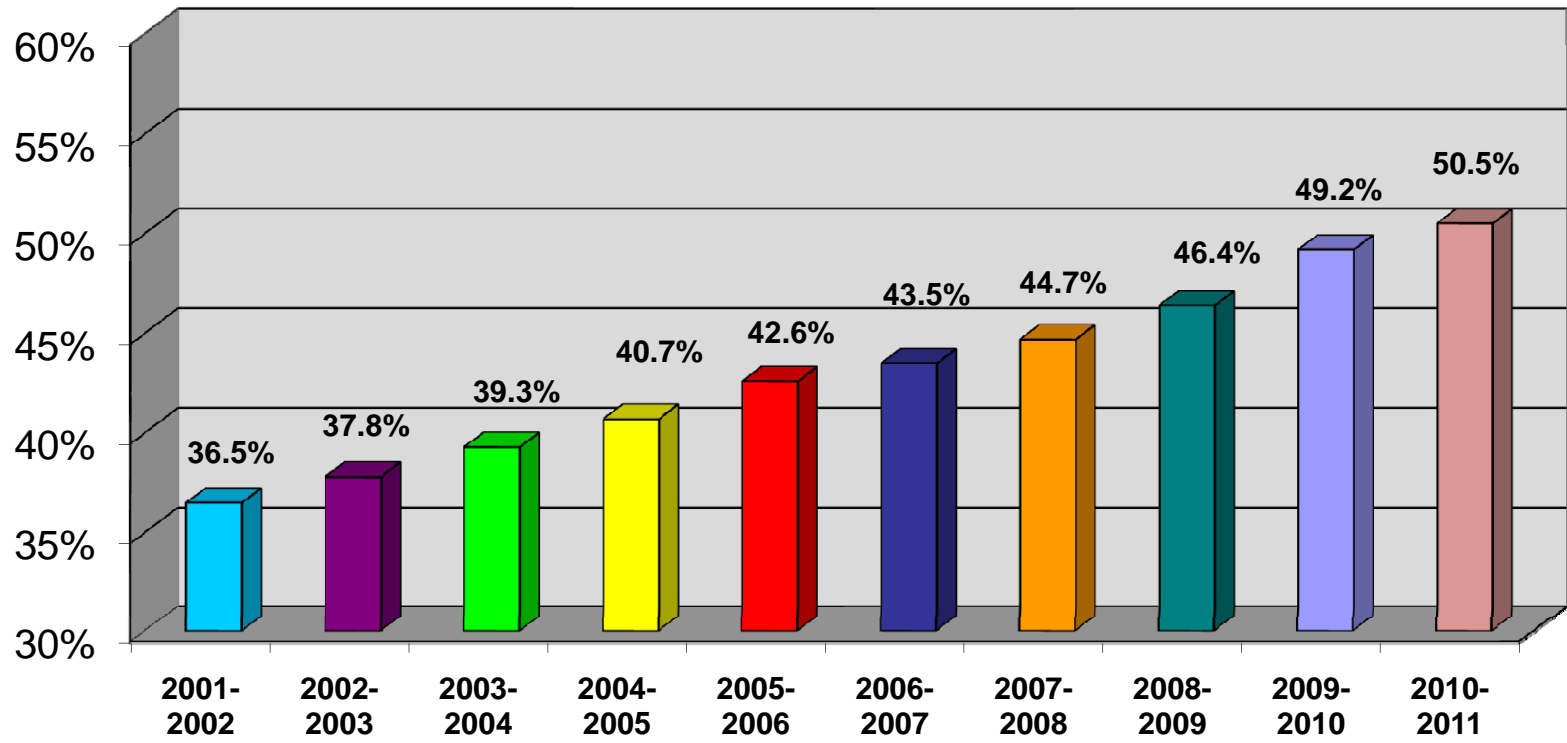


Springfield Public Schools Free and Reduced Lunch Rates

Building	School Year 2010-2011 (Core Data reporting as of January 26, 2011)					Comparison to Previous Year	
	Total Enrollment FTE (January 2010-2011)	Free Lunch	Reduced Lunch	Total Free and Reduced Lunch	Percent Free and Reduced Lunch (January 2010-2011)	Previous Year's Free and Reduced Percent (2009-2010)	Change 2009-2010 to 2010- 2011
BINGHAM	366.00	259.00	25.00	284.00	77.6%	76.4%	1.2%
BISSETT	272.00	208.00	20.00	228.00	83.8%	83.7%	0.2%
BOWERMAN	287.00	230.00	25.00	255.00	88.9%	89.8%	-0.9%
BOYD	211.00	150.00	13.00	163.00	77.3%	78.8%	-1.6%
CAMPBELL	191.00	174.00	6.00	180.00	94.2%	93.8%	0.4%
COWDEN	260.00	152.00	20.00	172.00	66.2%	63.3%	2.9%
DELAWARE	195.00	111.00	14.00	125.00	64.1%	64.0%	0.1%
DISNEY	525.00	119.00	30.00	149.00	28.4%	25.1%	3.2%
FIELD	413.00	74.00	22.00	96.00	23.2%	23.4%	-0.2%
FREMONT	173.00	116.00	16.00	132.00	76.3%	77.8%	-1.5%
GRAY	494.00	60.00	13.00	73.00	14.8%	15.2%	-0.4%
HARRISON	357.00	109.00	15.00	124.00	34.7%	35.4%	-0.7%
HICKORY HILLS ELEM.	319.00	71.00	8.00	79.00	24.8%	24.5%	0.3%
HOLLAND	251.00	156.00	24.00	180.00	71.7%	71.2%	0.5%
JEFFRIES	534.00	256.00	52.00	308.00	57.7%	53.6%	4.1%
MANN	419.00	168.00	35.00	203.00	48.4%	40.8%	7.7%
MCBRIDE	454.00	62.00	37.00	99.00	21.8%	18.2%	3.6%
MCGREGOR	303.00	251.00	23.00	274.00	90.4%	92.2%	-1.8%
PERSHING ELEM.	145.00	49.00	14.00	63.00	43.4%	49.8%	-6.3%
PITTMAN	305.00	161.00	29.00	190.00	62.3%	61.9%	0.4%
PLEASANT VIEW ELEM.	258.00	79.00	19.00	98.00	38.0%	39.1%	-1.1%
PORTLAND	230.00	164.00	20.00	184.00	80.0%	80.2%	-0.2%
ROBBERSON	284.00	236.00	32.00	268.00	94.4%	91.8%	2.6%
ROUNTREE	271.00	126.00	11.00	137.00	50.6%	52.7%	-2.1%
SEQUIOTA	373.00	74.00	8.00	82.00	22.0%	23.0%	-1.1%
SHERWOOD	322.00	140.00	33.00	173.00	53.7%	50.5%	3.2%
SUNSHINE	193.00	101.00	15.00	116.00	60.1%	60.2%	-0.1%
TRUMAN	343.00	123.00	28.00	151.00	44.0%	45.2%	-1.2%
TWAIN	448.00	225.00	41.00	266.00	59.4%	55.8%	3.6%
WATKINS	318.00	225.00	31.00	256.00	80.5%	79.1%	1.4%
WEAVER	285.00	242.00	15.00	257.00	90.2%	95.1%	-4.9%
WELLER	321.00	267.00	17.00	284.00	88.5%	89.9%	-1.4%
WESTPORT	375.00	307.00	19.00	326.00	86.9%	85.8%	1.1%
WILDER	303.00	86.00	22.00	108.00	35.6%	30.1%	5.5%
WILLIAMS	263.00	226.00	14.00	240.00	91.3%	88.1%	3.2%
YORK	214.00	175.00	19.00	194.00	90.7%	90.4%	0.3%
ELEMENTARY TOTAL	11,275.00	5,732.00	785.00	6,517.00	57.8%	56.7%	1.1%
WILSON'S CREEK	472.00	55.00	20.00	75.00	15.9%	17.0%	-1.1%
INTERMEDIATE TOTAL	472.00	55.00	20.00	75.00	15.9%	17.0%	-1.1%
CARVER	763.00	306.00	65.00	371.00	48.6%	42.6%	6.1%
CHEROKEE	803.00	115.00	35.00	150.00	18.7%	17.0%	1.7%
HICKORY HILLS MIDDLE	454.00	197.00	30.00	227.00	50.0%	48.0%	2.0%
JARRETT	498.00	266.00	62.00	328.00	65.9%	62.0%	3.9%
PERSHING MIDDLE	705.00	186.00	51.00	237.00	33.6%	32.0%	1.6%
PIPKIN MIDDLE	550.00	362.00	55.00	417.00	75.8%	78.9%	-3.1%
PLEASANT VIEW MIDDLE	350.00	102.00	36.00	138.00	39.4%	36.0%	3.4%
REED MIDDLE	437.00	327.00	40.00	367.00	84.0%	85.3%	-1.3%
STUDY MIDDLE	399.00	314.00	36.00	350.00	87.7%	85.8%	1.9%
MIDDLE SCHOOL TOTAL	4,959.00	2,175.00	410.00	2,585.00	52.1%	50.3%	1.8%
CENTRAL HIGH	1,573.94	688.10	131.27	819.37	52.1%	53.4%	-1.3%
GLENDALE HIGH	1,266.00	272.50	77.50	350.00	27.6%	25.4%	2.2%
HILLCREST HIGH	997.69	471.85	82.98	554.83	55.6%	54.1%	1.5%
KICKAPOO HIGH	1,651.00	246.25	84.25	330.50	20.0%	19.2%	0.9%
PARKVIEW HIGH	1,402.75	572.44	118.26	690.70	49.2%	48.3%	0.9%
HIGH SCHOOL TOTAL	6,891.38	2,251.14	494.26	2,745.40	39.8%	39.1%	0.7%
DISTRICT TOTAL	23,597.38	10,213.14	1,709.26	11,922.40	50.5%	49.2%	1.3%

Springfield Public Schools Free and Reduced Lunch District Rate Trend



Springfield Public Schools - Percent Free and Reduced Lunch Rate History

Building / Year	2001-2002	2002-2003	2003-2004	2004-2005	2005-2006	2006-2007	2007-2008	2008-2009	2009-2010	2010-2011	One-Year Change	10-Year Change
Springfield District	36.5%	37.8%	39.3%	40.7%	42.6%	43.5%	44.7%	46.4%	49.2%	50.5%	1.3%	14.0%
Bingham Elementary	68.0%	68.1%	69.1%	68.3%	68.8%	72.0%	72.4%	71.6%	76.4%	77.6%	1.2%	9.6%
Bissett Elementary	75.6%	75.9%	77.4%	81.9%	78.4%	76.9%	81.9%	83.4%	83.7%	83.8%	0.1%	8.2%
Bowerman Elementary	79.2%	81.4%	77.0%	79.1%	81.0%	84.1%	83.9%	87.4%	89.8%	88.9%	-0.9%	9.7%
Boyd Elementary	86.6%	87.2%	81.9%	86.8%	85.1%	81.7%	76.4%	74.7%	78.8%	77.3%	-1.5%	-9.3%
Campbell Elementary	88.2%	85.3%	82.2%	86.0%	85.9%	88.1%	89.3%	94.9%	93.8%	94.2%	0.4%	6.0%
Cowden Elementary	40.1%	45.0%	48.0%	51.0%	48.8%	49.6%	51.3%	59.0%	63.3%	66.2%	2.9%	26.1%
Delaware Elementary	31.1%	31.7%	38.6%	44.9%	52.8%	56.6%	61.4%	61.3%	64.0%	64.1%	0.1%	33.0%
Disney Elementary	10.0%	9.8%	10.3%	11.7%	12.5%	17.1%	17.5%	21.7%	25.1%	28.4%	3.3%	18.4%
Fairbanks Elementary	88.7%	88.2%	91.2%	93.4%	n/a	n/a	n/a	n/a	n/a	n/a	n/a	n/a
Field Elementary	17.8%	20.1%	22.0%	21.6%	20.7%	22.5%	25.7%	25.2%	23.4%	23.2%	-0.2%	5.4%
Fremont Elementary	77.0%	66.1%	74.2%	75.3%	76.8%	69.3%	65.4%	66.2%	77.8%	76.3%	-1.5%	-0.7%
Gray Elementary	8.1%	9.5%	10.5%	13.9%	17.5%	14.9%	15.6%	12.2%	15.2%	14.8%	-0.4%	6.7%
Harrison Elementary	n/a	n/a	n/a	n/a	n/a	n/a	n/a	n/a	35.4%	34.7%	n/a	n/a
Hickory Hills Elementary	25.2%	28.6%	19.7%	17.7%	18.4%	20.5%	22.5%	23.1%	24.5%	24.8%	0.3%	-0.4%
Holland Elementary	53.8%	57.0%	58.0%	60.5%	66.1%	67.3%	66.8%	70.7%	71.2%	71.7%	0.5%	17.9%
Jeffries Elementary	32.6%	29.8%	36.7%	34.6%	39.5%	41.5%	43.1%	50.2%	53.6%	57.7%	4.1%	25.1%
Mann Elementary	24.1%	22.6%	24.9%	29.6%	32.9%	30.8%	32.4%	35.1%	40.8%	48.4%	7.6%	24.3%
McBride Elementary	12.7%	15.8%	16.4%	13.3%	15.0%	16.1%	16.3%	18.5%	18.2%	21.8%	3.6%	9.1%
McGregor Elementary	87.8%	94.0%	91.0%	90.1%	87.0%	89.8%	89.4%	90.6%	92.2%	90.4%	-1.8%	2.6%
Pepperdine Elementary	71.9%	n/a	n/a	n/a	n/a	n/a	n/a	n/a	n/a	n/a	n/a	n/a
Pershing Elementary	32.1%	34.2%	34.7%	34.5%	34.4%	32.5%	31.8%	40.7%	49.8%	43.4%	-6.4%	11.3%
Pittman Elementary	39.0%	47.6%	43.5%	50.0%	51.4%	54.5%	55.9%	59.9%	61.9%	62.3%	0.4%	23.3%
Pleasant View Elementary	16.9%	17.5%	18.6%	19.5%	23.0%	20.7%	21.2%	29.6%	39.1%	38.0%	-1.1%	21.1%
Portland Elementary	60.7%	54.8%	59.2%	54.8%	66.9%	72.2%	69.9%	66.8%	80.2%	80.0%	-0.2%	19.3%
Robberson Elementary	87.4%	81.6%	84.6%	84.8%	83.7%	86.7%	85.3%	87.3%	91.8%	94.4%	2.6%	7.0%
Rountree Elementary	38.3%	41.0%	38.6%	35.9%	46.4%	45.1%	52.7%	47.4%	52.7%	50.6%	-2.1%	12.3%
Sequiota Elementary	13.8%	10.3%	14.3%	14.1%	20.0%	19.3%	21.4%	23.6%	23.0%	22.0%	-1.0%	8.2%
Shady Dell Elementary	74.8%	75.7%	82.2%	85.4%	84.0%	n/a	n/a	n/a	n/a	n/a	n/a	n/a
Sherwood Elementary	27.1%	25.8%	25.5%	32.7%	36.4%	37.8%	43.2%	47.9%	50.5%	53.7%	3.2%	26.6%
Sunshine Elementary	41.3%	43.7%	40.0%	49.2%	51.4%	56.0%	56.2%	60.7%	60.2%	60.1%	-0.1%	18.8%
Truman Elementary	31.5%	31.8%	30.6%	32.0%	33.5%	36.1%	31.5%	38.9%	45.2%	44.0%	-1.2%	12.5%
Twain Elementary	36.3%	34.2%	38.0%	44.2%	51.3%	50.5%	53.3%	55.5%	55.8%	59.4%	3.6%	23.1%
Watkins Elementary	64.9%	68.1%	66.7%	68.4%	72.4%	68.5%	68.6%	78.0%	79.1%	80.5%	1.4%	15.6%
Weaver Elementary	92.1%	88.1%	92.8%	88.7%	90.6%	90.4%	90.9%	92.6%	95.1%	90.2%	-4.9%	-1.9%
Weller Elementary	76.9%	81.1%	86.1%	81.4%	79.0%	85.7%	89.9%	86.7%	89.9%	88.5%	-1.4%	11.6%
Westport Elementary	80.8%	79.1%	75.8%	77.7%	82.5%	82.1%	80.1%	82.9%	85.8%	86.9%	1.1%	6.1%
Wilder Elementary	15.4%	18.1%	18.8%	17.2%	23.4%	25.6%	33.8%	33.5%	30.1%	35.6%	5.5%	20.2%
Williams Elementary	75.1%	76.0%	78.5%	82.7%	84.7%	85.8%	86.0%	87.0%	88.1%	91.3%	3.2%	16.2%
York Elementary	83.7%	82.7%	81.5%	80.5%	82.4%	83.0%	83.7%	91.3%	90.4%	90.7%	0.3%	7.0%

Building / Year	2001-2002	2002-2003	2003-2004	2004-2005	2005-2006	2006-2007	2007-2008	2008-2009	2009-2010	2010-2011	One-Year Change	10-Year Change
Carver Middle School	25.8%	26.2%	29.1%	29.1%	33.4%	34.7%	34.8%	39.2%	42.6%	48.6%	6.0%	22.8%
Cherokee Middle School	7.9%	9.9%	9.1%	9.4%	10.6%	13.8%	14.7%	15.6%	17.0%	18.7%	1.7%	10.8%
Hickory Hills Middle School	29.7%	35.8%	39.2%	43.8%	42.8%	44.3%	46.4%	45.0%	48.0%	50.0%	2.0%	20.3%
Jarrett Middle School	34.9%	44.2%	48.1%	50.9%	52.4%	52.3%	55.3%	58.7%	62.0%	65.9%	3.9%	31.0%
Pershing Middle School	16.4%	20.1%	21.3%	19.4%	20.4%	21.8%	25.7%	28.6%	32.0%	33.6%	1.6%	17.2%
Pipkin Middle School	75.5%	77.0%	81.2%	80.3%	82.9%	80.4%	78.4%	76.7%	78.9%	75.8%	-3.1%	0.3%
Pleasant View Middle School	28.9%	30.6%	28.6%	27.2%	31.3%	32.8%	28.4%	31.0%	36.0%	39.4%	3.4%	10.5%
Reed Middle School	75.3%	72.7%	75.0%	75.8%	76.5%	79.3%	80.0%	82.2%	85.3%	84.0%	-1.3%	8.7%
Study Middle School	76.4%	79.5%	81.1%	84.1%	82.9%	81.7%	82.9%	83.3%	85.8%	87.7%	1.9%	11.3%
Wilson's Creek Intermediate	n/a	n/a	n/a	n/a	16.3%	13.6%	14.0%	14.3%	17.0%	15.9%	-1.1%	n/a
Central High School	45.9%	44.9%	45.9%	48.1%	49.3%	51.3%	50.4%	50.8%	53.4%	52.1%	-1.3%	6.2%
Glendale High School	9.8%	12.2%	12.9%	14.5%	16.2%	18.3%	19.1%	21.2%	25.4%	27.6%	2.2%	17.8%
Hillcrest High School	28.4%	29.5%	34.9%	38.0%	40.3%	43.7%	45.4%	49.9%	54.1%	55.6%	1.5%	27.2%
Kickapoo High School	6.0%	8.9%	10.2%	11.2%	12.3%	13.8%	15.4%	16.7%	19.2%	20.0%	0.8%	14.0%
Parkview High School	27.7%	28.7%	33.4%	38.7%	42.7%	44.8%	45.9%	45.5%	48.3%	49.2%	0.9%	21.5%