

1 A *rectangle* whose sides are all the same length. What is

Q my name?

1

square

2 A *parallelogram* with four sides the same length. What is

Q my name?

2

rhombus

3 A 4-sided *polygon* whose opposite sides have equal length.

Q What is my name?

3

parallelogram

4 A *parallelogram* whose corners are all right angles. What

Q is my name?

4

rectangle

A

5

A triangle with all three sides equal in length. The angles also have the same measure. What is my name?

Q

5

equilateral triangle

A

6

A triangle with two equal sides and two equal sides. What is my name?

Q

6

isosceles triangle

A

7

A triangle with all sides a different length. The angles all have a different measurement. What is my name?

Q

7

scalene triangle

A

8

A triangle with all angles less than 90° . What is my name?

Q

8

acute triangle

A

9 A triangle with one angle larger than 90° . What is my name?

Q

9

obtuse
triangle

A

10 A 4-sided *polygon* that has exactly one pair of parallel sides.

Q What is my name?

10

trapezoid

A

11 A 4-sided polygon with two pairs of equal sides. The equal sides are next to each other. What is my name?

Q

(The four sides cannot have the same length.)

11

kite

A

12 I am a polygon with 5 sides.

Q What is my name?

12

pentagon

A

13 I am a polygon
with *six* sides.

Q What is my name?

13

hexagon

A

14 I am a polygon
with *eight* sides.

Q What is my name?

14

octagon

A

15 A straight path joining
two points. The two points
are called endpoints.

Q What is my name?

15

line
segment

A

16 A straight path that
has one endpoint and goes
on forever in one
direction. What is my name?

Q

16

ray

A

17

What is my name?

I go on forever in
both directions.

Q

17

line

A

18

How many lines of
symmetry does a
regular *quadrangle*

(*quadrilateral*) have?

Q

18

4

A

19

How many lines of
symmetry does a
regular *pentagon*

have?

Q

19

5

A

20

How many lines of
symmetry does a
regular *hexagon* have?

Q

20

6

A

21

How many lines of symmetry does a regular *octagon* have?

Q

21

8

A

22

Name 3 capital letters with a line of symmetry.

Q

22

Possible answers:

A, C, B, D, E, H, I, K,
M, O, T, V, W, X, Y

A

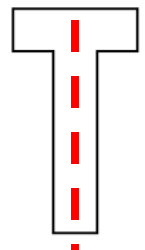
23

Definition of a line of symmetry:

Q

23

A figure has line symmetry if a line can divide it into two parts that look like mirror images of each other. The two parts look alike but face in opposite directions.



A

24

Point out 3 items in the room with a line of symmetry.

Q

How do you know?

24

Possible answers:
computer monitor,
whiteboard, blocks on
wall, tiles on floor, etc

A