

*"We exist for the Academic Excellence of All Students."*

2<sup>nd</sup> Quarterly Report of the Indicators and Measures of the  
District Goals for the Springfield R-XII School District



Presented to the  
Board of Education  
January 24, 2012

2<sup>nd</sup> Quarterly Report

## Table of Contents

Goal/Indicator/Measure	Page Number
<b><u>Goal 1: Improve Student Achievement</u></b>	
1.1 Improve Student Performance in Communication Arts	
1. Percent of Students Proficient/Advanced in State and District Measures of Achievement	6
1.2 Improve Student Performance in Mathematics	
1. Percent of Students Proficient/Advanced in State and District Measures of Achievement	15
1.3 Improve Student Performance in Science	
1. Percent of Students Proficient/Advanced in State and District Measures of Achievement	22
1.4 Maintain High Performance on ACT	
1. Composite Scores (ACT)	24
<b><u>Goal 2: Improve Graduation Rate</u></b>	
2.1 Improve Graduation Rate as Measured by MSIP Standard 9.5	
1. Percent of Students Persisting to Graduation	26
2.4 Increase Student Attendance	
1. District Attendance Rate	29
<b><u>Goal 3: Ensure Effective and Efficient Use of Resources</u></b>	
3.2 Ensure a Safe and Nurturing Environment for Learning	
1. Percent of Lost Work Time (Workers Compensation Claims)	32
Record of Strengths, Opportunities for Improvement, Areas Needing Further Study, and Updates Identified by the Springfield R-XII School District for the 2011-2012 School Year	35

Record of Strengths, Opportunities for Improvement, Areas Needing Further Study, and Updates Identified by the Springfield R-XII School District for the 2010-2011 School Year	36
Record of Strengths, Opportunities for Improvement, Areas Needing Further Study, and Updates Identified by the Springfield R-XII School District for the 2009-2010 School Year	38
Record of Strengths, Opportunities for Improvement, Areas Needing Further Study, and Updates Identified by the Springfield R-XII School District for the 2008-2009 School Year	40
Record of Strengths, Opportunities for Improvement, Areas Needing Further Study, and Updates Identified by the Springfield R-XII School District for the 2007-2008 School Year	42
Record of Strengths, Opportunities for Improvement, Areas Needing Further Study, and Updates Identified by the Springfield R-XII School District for the 2006-2007 School Year	43

## Listing of Performance Measures, Figures, and Tables

Performance Measures, Figures, and Tables	Page Number
Performance Measure: Springfield Public Schools, Beginning-of-Year Performance Series Percent of Students by Achievement Level 2009-2010 to 2011-2012	6
Figure 1: Springfield Public Schools, Communication Arts, Performance Series Beginning-of-Year Percent Top Two, 2009-2010 to 2011-2012	8
<b>Figure 2: Springfield Public Schools, Performance Series Scale Score Average by 2011-2012 Grade Level Cohorts for Communication Arts</b>	<b>8</b>
Figure 3: Springfield Public Schools, Comparison of Beginning-of-Year Quartile Distributions for 2010-2011 and 2011-2012, Language Arts	9
Figure 4: Springfield Public Schools, Comparison of Beginning-of-Year Quartile Distributions for 2010-2011 and 2011-2012, Reading	10
<b>Performance Measure: Springfield Public Schools, Missouri and National Averages, ACT English, 2005-2006 to 2010-2011</b>	<b>11</b>
<b>Performance Measure: Springfield Public Schools, Missouri and National Averages, ACT Reading, 2005-2006 to 2010-2011</b>	<b>13</b>
Performance Measure: Springfield Public Schools, Math, Beginning-of-Year Performance Series Percent of Students by Achievement Level 2009-2010 to 2011-2012	15
Figure 5: Springfield Public Schools, Math, Performance Series Beginning-of-Year Percent Top Two, 2009-2010 to 2011-2012	17
Figure 6: Springfield Public Schools, Performance Series Scale Score Average by 2011-2012 Grade Level Cohorts for Mathematics	17
Figure 7: Springfield Public Schools, Comparison of Beginning-of-Year Quartile Distributions for 2010-2011 and 2011-2012, Math	18
<b>Performance Measure: Springfield Public Schools, Missouri and National Averages, ACT Math, 2005-2006 to 2010-2011</b>	<b>20</b>
<b>Performance Measure: Springfield Public Schools, Missouri and National Averages, ACT Science, 2005-2006 to 2010-2011</b>	<b>22</b>

Performance Measure: Springfield Public Schools, Comparable Districts and Regional Cohort, ACT Composite Scores, 2004-2005 to 2010-2011	24
Figure 8: Springfield Public Schools, Comparable Districts, and Regional Cohort, Percent of Graduates Taking the ACT, 2004-2005 to 2010-2011	25
Performance Measure: Springfield Public Schools, Comparable Districts & Regional Cohort, Graduation Rate, 2004-2005 to 2010-2011	26
Figure 9: Springfield Public Schools, Comparable Districts and Missouri Average, Four-Year Graduation Rate, 2010-2011	27
Performance Measure: Springfield Public Schools, Comparable Districts & Regional Cohort, District Attendance Rate, 2004-2005 to 2010-2011	29
Figure 10: 2011 District Attendance Rate Comparison	30
Figure 11: Springfield Public Schools, Comparable Districts, and Regional Cohort, District K-8 Attendance Rate, 2004-2005 to 2010-2011	30
Figure 12: Springfield Public Schools, Comparable Districts, and Regional Cohort, District 9-12 Attendance Rate, 2004-2005 to 2010-2011	31
Performance Measure: Springfield Public Schools, Workers Compensation Incident Rates, All Injury and Claim Types, 2004-2005 to 2010-2011	32
Figure 13: Workers' Compensation Incident Rates—All Injury and Claim Types SPS Comparison to US & MO Rates—Public Only	33
Figure 14: Springfield Public Schools, Workers Compensation Incident Rates, Injuries with Lost Workdays, 2004-2005 to 2010-2011	33
Figure 15: Workers' Compensation Incident Rate—Injuries with Lost Workdays SPS Comparison to US & MO Rates—Public Only	34

\*The indicators/graphs highlighted in the listing of figures represent the strengths, opportunities for improvement, updates, and areas needing further study identified by the Superintendent's Cabinet of the Springfield R-XII School District.

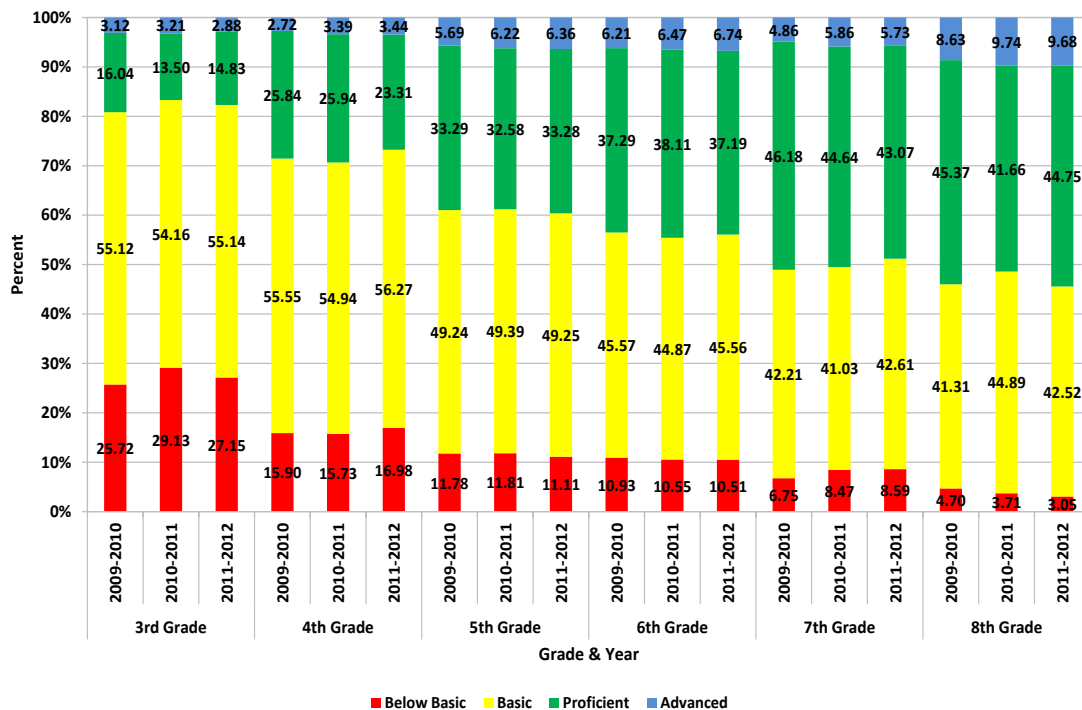


# Goal 1: Improve Student Achievement

## 1. Improve Student Performance in Communication Arts

### 1. Percent of Students Proficient/Advanced in State and District Measures of Achievement

Springfield Public Schools, Communication Arts, Beginning-of-Year Performance Series Percent of Students by Achievement Level 2009-2010 to 2011-2012



Source: Springfield Public Schools, Quality Improvement & Accountability

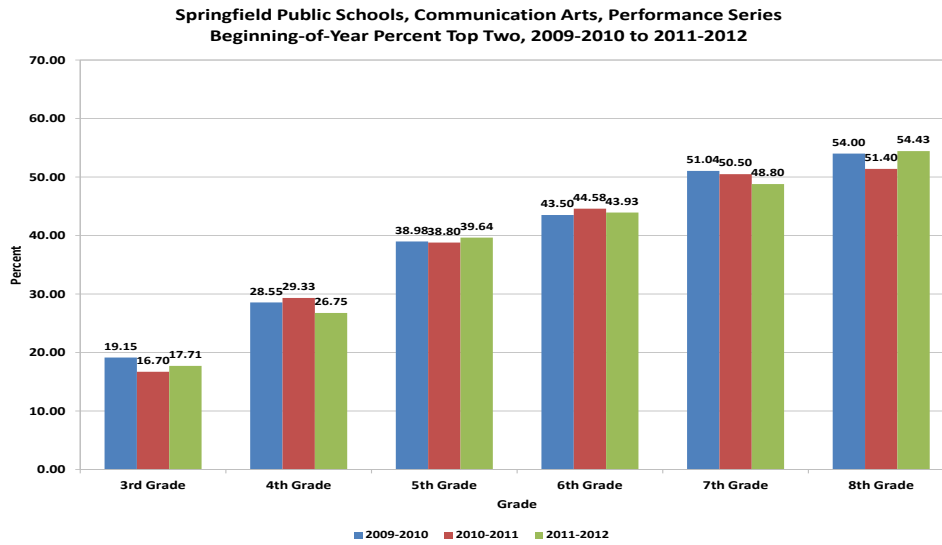
#### Points:

- X-axis represents the grade level and school year; Y-axis represents the percent of students scoring in each achievement level on the beginning-of-year communication arts Performance Series assessments.
- The four achievement levels on the Performance Series assessment are in alignment with the achievement levels on the MAP assessment. *Because the Performance Series assessment and the predicted achievement levels are reflective of the entire grade level's content, it is*

*expected that student performance (via lower percents in the top two levels) will be lower at the beginning of the year than it would be at the middle or end of year.*

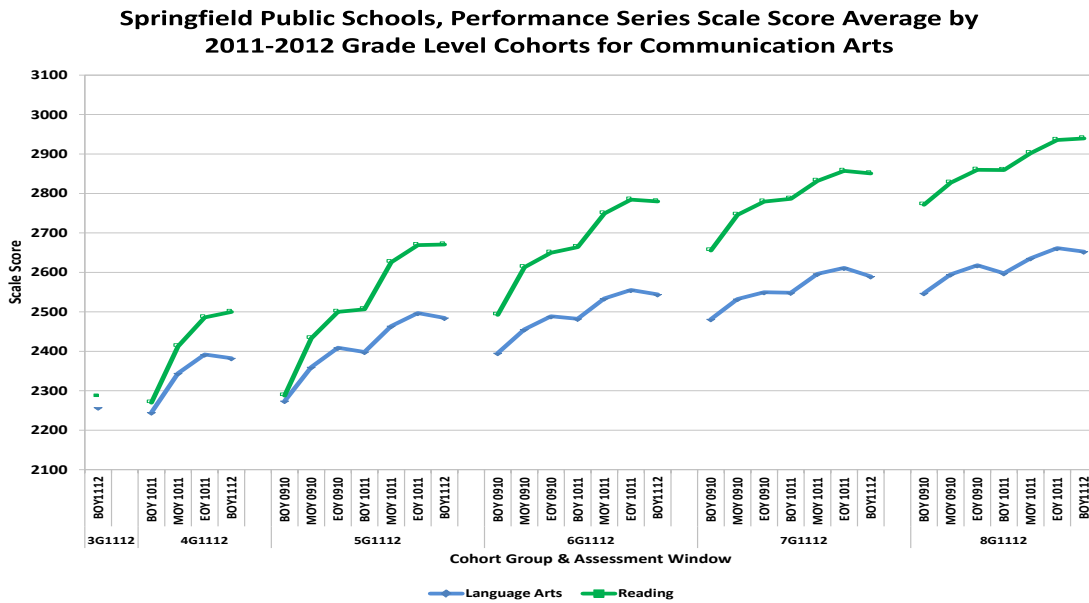
- The performance measure provides a comparison of the differences in Communication Arts (Reading & Language Arts) performance by achievement levels at the beginning-of-year for 2009-2010, 2010-2011, and 2011-2012. In this figure, improvements in performance are evident when the below basic (red) and basic (yellow) sections are less than the previous year and proficient (green) and advanced (blue) are higher.
- The following are the largest differences evident from an examination of the performance measure from 2010-2011 to 2011-2012 by achievement level:
  - Below Basic
    - Increase: Grade 4 (+1.25)
    - Decrease: Grade 3 (-1.98)
  - Basic
    - Increase: Grade 7 (+1.58)
    - Decrease: Grade 8 (+2.37)
  - Proficient
    - Increase: Grade 8 (+3.09)
    - Decrease: Grade 4 (-2.63)
  - Advanced
    - Increase: Grade 6 (+0.27)
    - Decrease: Grade 3 (-0.33)
- Figure 1 presents the percent of students scoring proficient and advanced (sum) for the Performance Series Communication Arts performance measure at the beginning of the year for the past three years.

Figure 1: Springfield Public Schools, Communication Arts, Performance Series Beginning-of-Year Percent Top Two, 2009-2010 to 2011-2012



- Figure 2 provides the scale score average for the reading and language arts Performance Series assessments by the 2011-2012 grade level cohorts. This figure shows the performance across the testing windows from the last two years as well as for the 2011-2012 beginning-of-year.

Figure 2: Springfield Public Schools, Performance Series Scale Score Average by 2011-2012 Grade Level Cohorts for Communication Arts



- The Performance Series cohort results for Language Arts and Reading have been identified as an update for the Springfield R-XII school district.

Performance Series Observed Mean Gains Beginning-of-Year Quartile Distributions

- The 2010-2011 3<sup>rd</sup> Quarterly Report (p.9) provided an overview for thinking about gains in student learning with Performance Series assessments. The reader is referred to that section of the report for more information on student growth.
- The 2010-2011 4<sup>th</sup> Quarterly Report (p.12) represented the first time Springfield Public Schools presented the district averages relative to the Observed Mean Gains documented from Scantron, the proprietor of the Performance Series assessments.
  - The observed mean gains are dependent upon a student’s beginning-of-year assessment.
- Figures 3 (Language Arts) and 4 (Reading) present the distribution of students by quartile by grade level for 2010-2011 and 2011-2012.

Figure 3: Springfield Public Schools, Comparison of Beginning-of-Year Quartile Distributions for 2010-2011 and 2011-2012, Language Arts

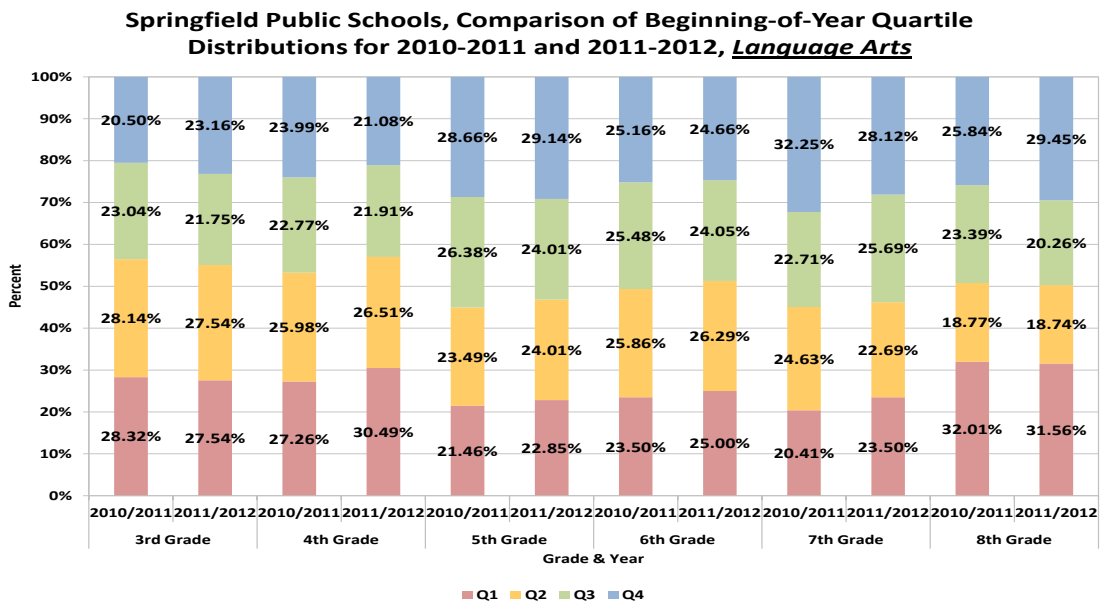
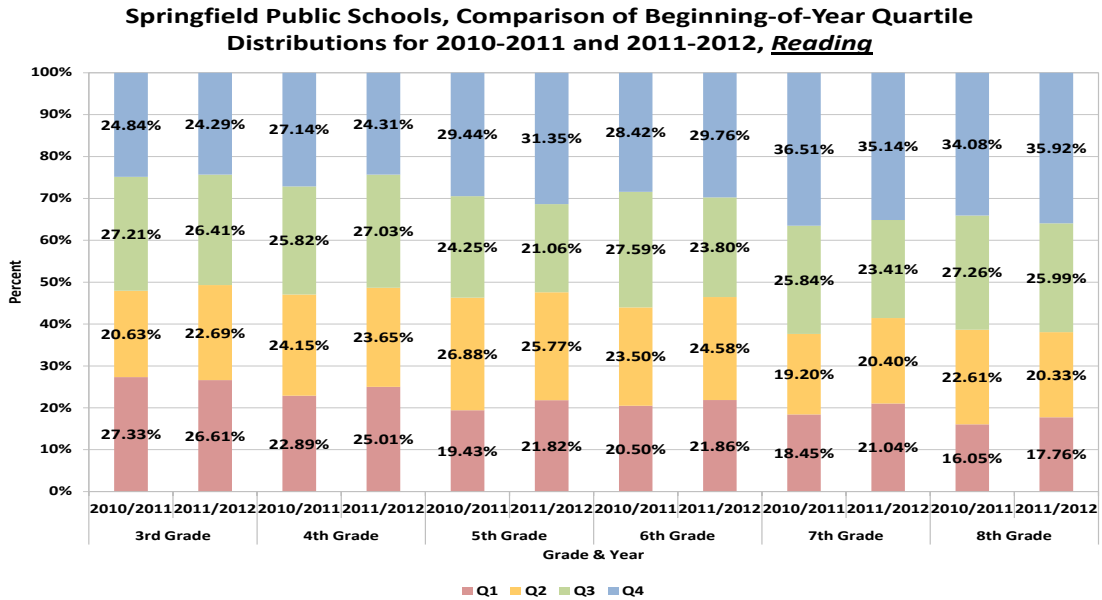


Figure 4: Springfield Public Schools, Comparison of Beginning-of-Year Quartile Distributions for 2010-2011 and 2011-2012, Reading



**NOTE TO THE READER:**

School level communication arts results by grade level by school are available by following the link below.

<http://springfieldpublicschools.org/accountability/documents/P.S.CAResultsBOY2011-2012.pdf>

District level disaggregated communication arts results by AYP subgroups are available by following the link below.

<http://springfieldpublicschools.org/docs/Quarterly%20Reports/documents/PSBOYIII2CADisaggforLink.pdf>

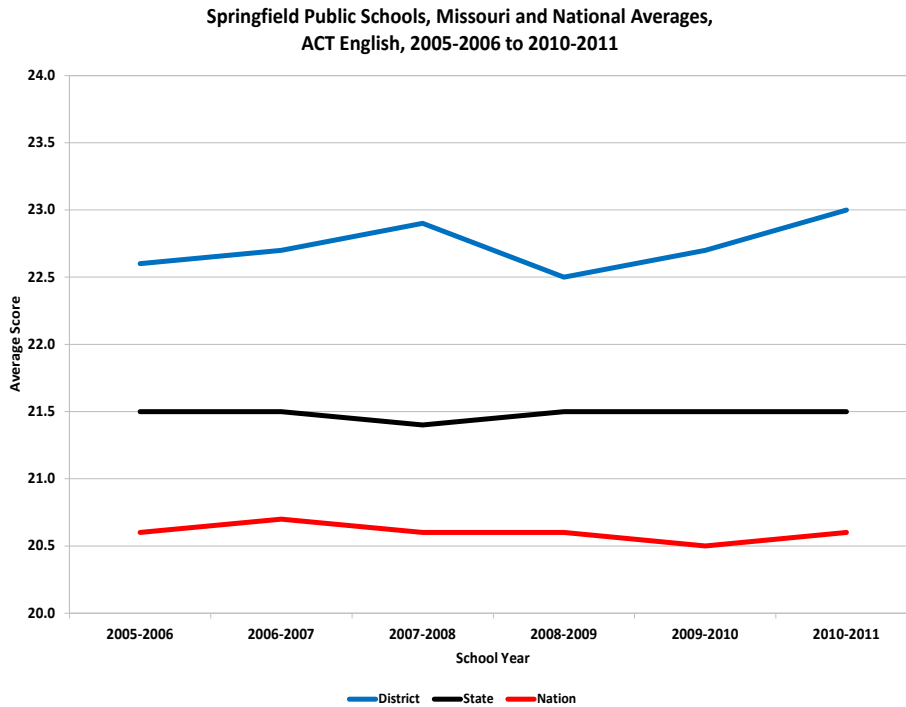
**SP5 TARGET**

1.1.1 Annual improvement in the percentage of students scoring proficient or advanced as measured by the Missouri DESE performance standards.

*Progress has been made toward this goal at the 5<sup>th</sup> and 8<sup>th</sup> grade levels.*

## 1. Improve Student Performance in Communication Arts

### 1. Percent of Students Proficient/Advanced in State and District Measures of Achievement



Source: Springfield Public Schools, Quality Improvement & Accountability

#### Points:

- X-axis represents the school year; Y-axis represents the English composite average from the ACT.
- Springfield's performance has consistently been above state and national averages for the five-year span, approximately 22.5 for Springfield, 21.5 for Missouri, and 20.5 for the nation.
- Springfield's 2010-2011 ACT English composite average of 23.0 is the highest of the six years presented.
- The ACT comparable performance for English has been identified as a strength for the Springfield R-XII school district.

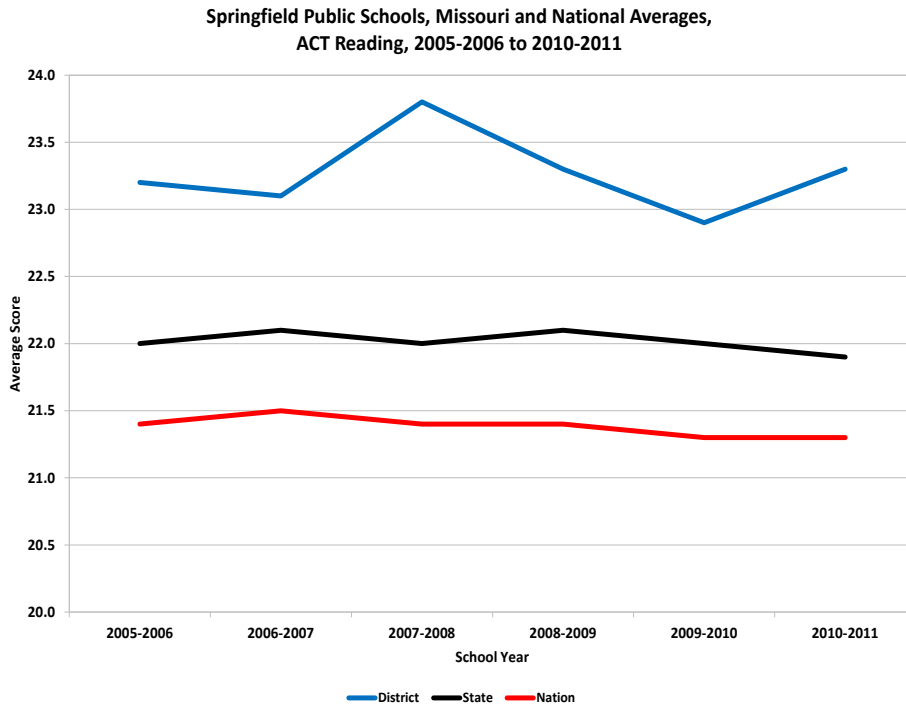
SP5 TARGET

1.1.2 Springfield Public Schools ACT composite score will be above state and national average

*This target has been met for English.*

## 1. Improve Student Performance in Communication Arts

### 2. Percent of Students Proficient/Advanced in State and District Measures of Achievement



Source: Springfield Public Schools, Quality Improvement & Accountability

#### Points:

- X-axis represents the school year; Y-axis represents the reading composite average from the ACT.
- Springfield's performance has consistently been above state and national averages for the five-year span, approximately 23.0 for Springfield, 22.0 for Missouri, and 21.5 for the nation.
- The ACT comparable performance for English has been identified as a strength and as an area needing further study for the Springfield R-XII school district.

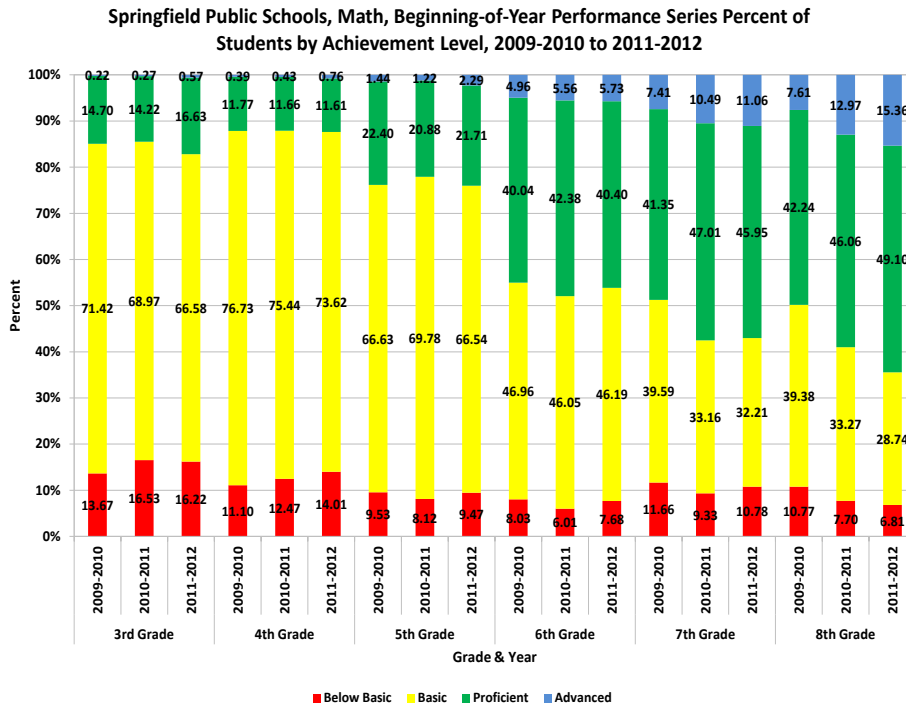
SP5 TARGET

1.1.2 Springfield Public Schools ACT composite score will be above state and national average.

*This target has been met for reading.*

## 2. Improve Student Performance in Math

### 1. Percent of Students Proficient/Advanced in State and District Measures of Achievement



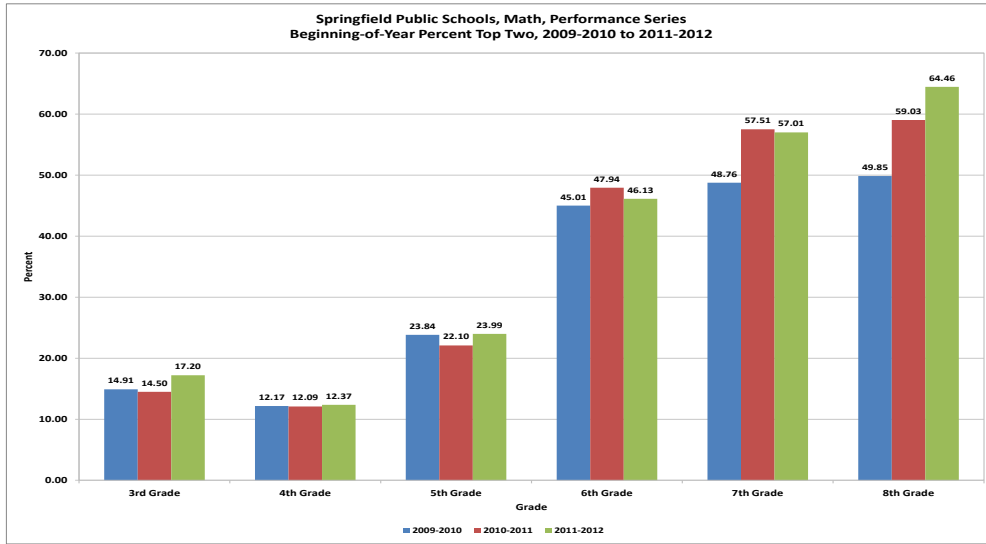
Source: Springfield Public Schools, Quality Improvement & Accountability

#### Points:

- X-axis represents the grade level and school year; Y-axis represents the percent of students scoring in each achievement level on the beginning-of-year mathematics Performance Series assessments.
- The four achievement levels on the Performance Series assessment are in alignment with the achievement levels on the MAP assessment. *Because the Performance Series assessment and the predicted achievement levels are reflective of the entire grade level's content, it is expected that student performance (via lower percents in the top two levels) will be lower at the beginning of the year than it would be at the middle or end of year.*

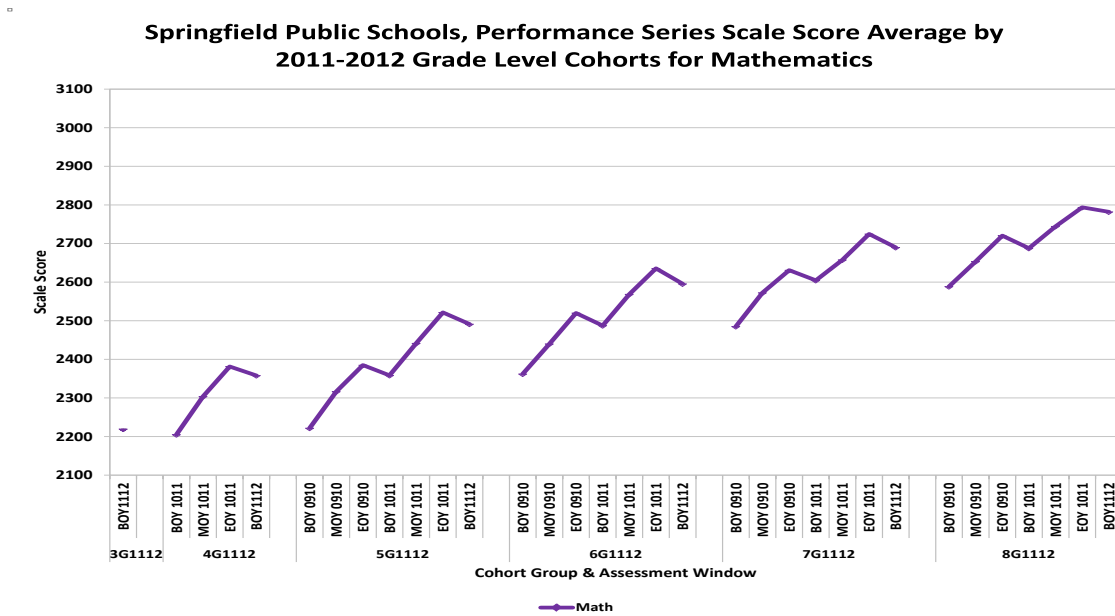
- The performance measure provides a comparison of the differences in mathematics performance by achievement levels at the beginning-of-year for 2009-2010 to 2011-2012. In this figure, improvements in performance are evident when the below basic (red) and basic (yellow) sections are less than the previous year and proficient (green) and advanced (blue) are higher.
- The following differences are evident from an examination of the performance measure:
  - Below Basic
    - Increase: Grade 6 (+1.67)
    - Decrease: Grade 8 (-0.89)
  - Basic
    - Increase: Grade 7 (+7.17)
    - Decrease: Grade 8 (-4.53)
  - Proficient
    - Increase: Grade 8 (+3.04)
    - Decrease: Grade 6 (-1.98)
  - Advanced
    - Increase: All Grades
    - Decrease: None
- Figure 5 presents the percent of students scoring proficient and advanced (sum) for the Performance Series mathematics performance measure for the past three years.

Figure 5: Springfield Public Schools, Math, Performance Series Beginning-of-Year Percent Top Two, 2009-2010 to 2011-2012



- Figure 6 provides the scale score average for the mathematics Performance Series assessment by the 2011-2012 grade level cohorts. This figure shows the performance across the testing windows from the last two years as well as for the 2011-2012 beginning-of-year.

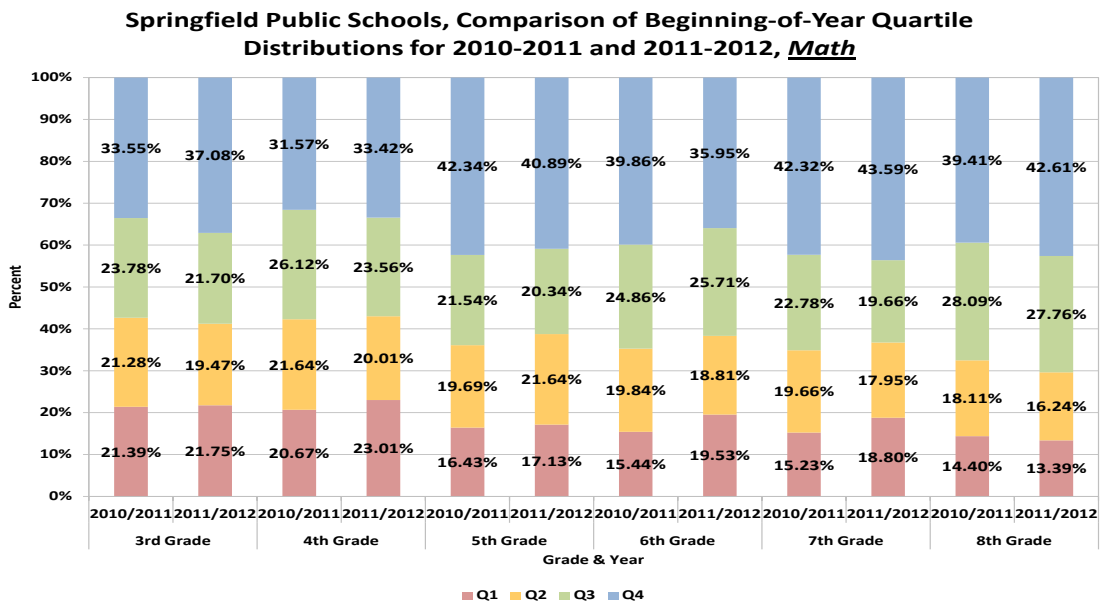
Figure 6: Springfield Public Schools, Performance Series Scale Score Average by 2011-2012 Grade Level Cohorts for Mathematics



Performance Series Observed Mean Gains Beginning-of-Year Quartile Distributions

- The 2010-2011 3<sup>rd</sup> Quarterly Report (p.9) provided an overview for thinking about gains in student learning with Performance Series assessments. The reader is referred to that section of the report for more information on student growth.
- The 2010-2011 4<sup>th</sup> Quarterly Report (p.12) represented the first time Springfield Public Schools presented the district averages relative to the Observed Mean Gains documented from Scantron, the proprietor of the Performance Series assessments.
  - The observed mean gains are dependent upon a student’s beginning-of-year assessment.
- Figures 7 (math) presents the distribution of students by quartile by grade level for 2010-2011 and 2011-2012.

Figure 7: Springfield Public Schools, Comparison of Beginning-of-Year Quartile Distributions for 2010-2011 and 2011-2012, Math



NOTE TO THE READER:

School level mathematics results by grade level by school are available by following the link below.

<http://springfieldpublicschoolsno.org/accountability/documents/P.S.MathResultsBOY2011-2012.pdf>

District level disaggregated mathematics results by AYP subgroups are available by following the link below.

<http://springfieldpublicschoolsno.org/docs/Quarterly%20Reports/documents/PSBOYIII2MATHDisaggforLink.pdf>

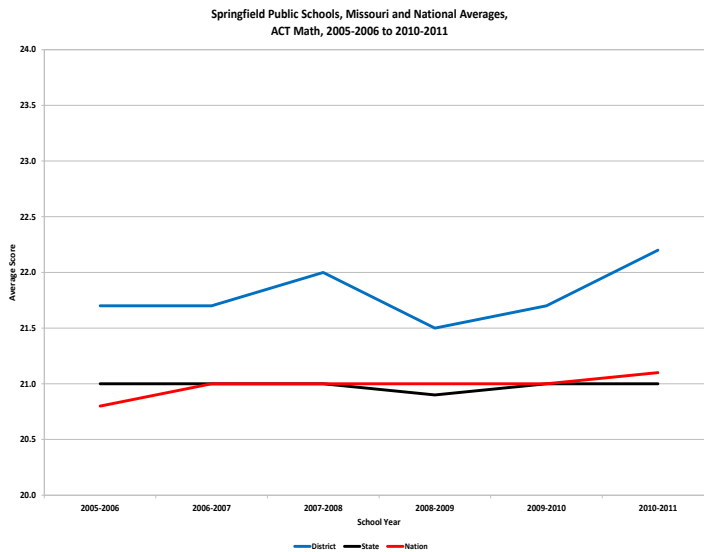
SP5 TARGET

2.1.1 Annual improvement in the percentage of students scoring proficient or advanced as measured by the Missouri DESE performance standards.

*Progress has been made toward this goal at grades 3, 4, 5, and 8.*

## 2. Improve Student Performance in Math

### 1. Percent of Students Proficient/Advanced in State and District Measures of Achievement



Source: Springfield Public Schools, Quality Improvement & Accountability

#### Points:

- X-axis represents the school year; Y-axis represents the mathematics composite average from the ACT.
- Springfield's performance has consistently been above state and national averages for the five-year span, approximately 21.5 for Springfield and 21.0 for Missouri and the nation.
- Springfield's 2010-2011 ACT Math composite average of 22.2 is the highest of the six years presented.
- The ACT comparable performance for Math has been identified as a strength for the Springfield R-XII school district.

SP5 TARGET

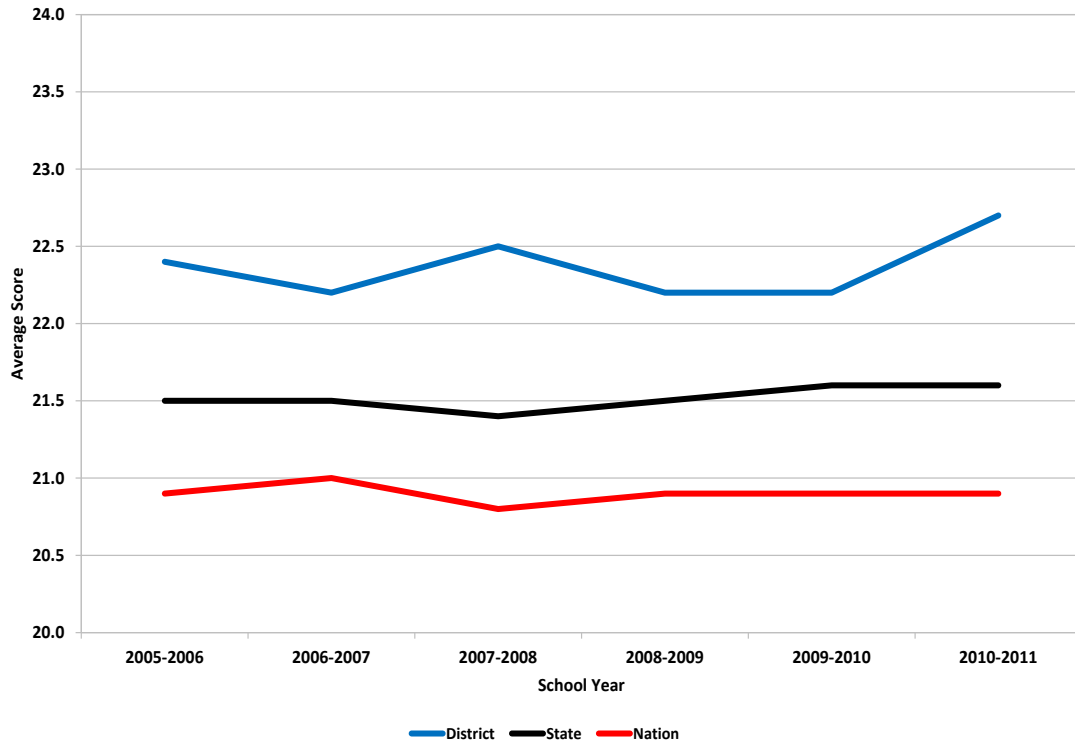
2.1.2 Springfield Public Schools ACT composite score will be above state and national average.

*This target has been met for math.*

### 3. Improve Student Performance in Science

#### 1. Percent of Students Proficient/Advanced in State and District Measures of Achievement

**Springfield Public Schools, Missouri and National Averages,  
ACT Science, 2005-2006 to 2010-2011**



Source: Springfield Public Schools, Quality Improvement & Accountability

#### Points:

- X-axis represents the school year; Y-axis represents the science composite average from the ACT.
- Springfield's performance has consistently been above state and national averages for the five-year span, approximately 22.2 for Springfield, 21.5 for Missouri, and 21.0 for the nation.
- Springfield's 2010-2011 ACT Science composite average of 22.7 is the highest of the six years presented.

- The ACT comparable performance for Science has been identified as a strength for the Springfield R-XII school district.

SP5 TARGET

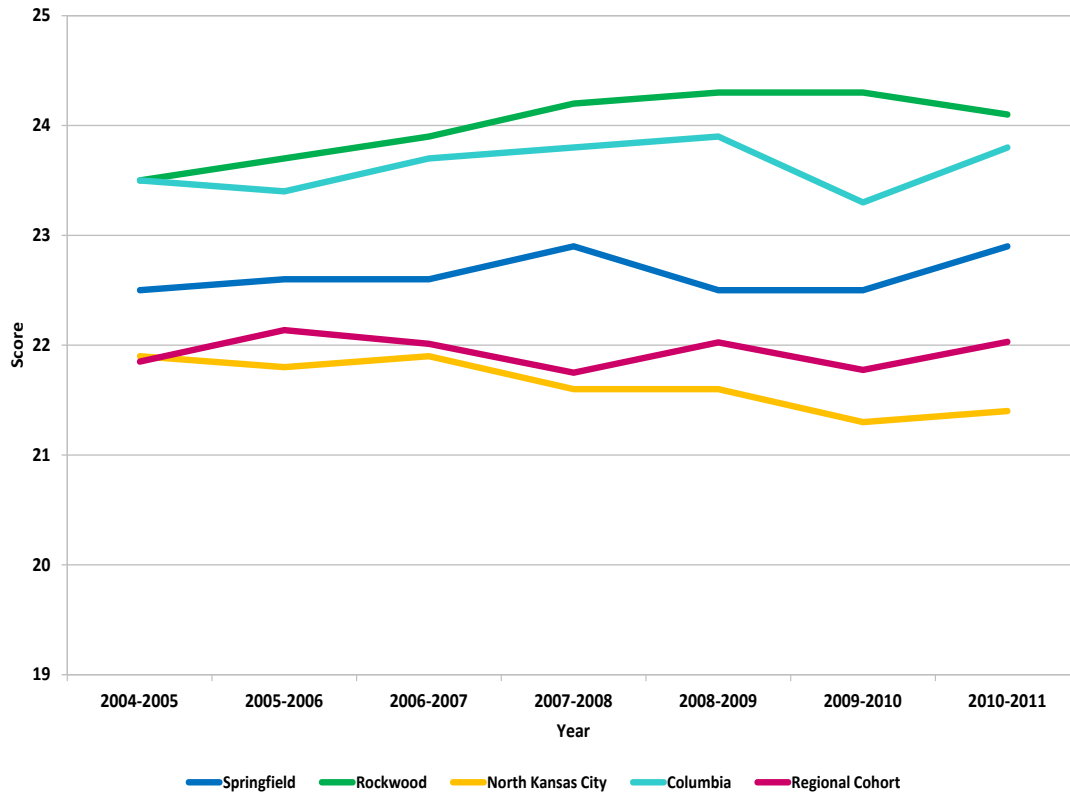
3.1.2 Springfield Public Schools ACT composite score will be above state and national average.

*This target has been met for science*

## 4. Maintain High Performance on ACT

### 1. Composite Scores (ACT)

**Springfield Public Schools, Comparable Districts and Regional Cohort,  
ACT Composite Scores, 2004-2005 to 2010-2011**

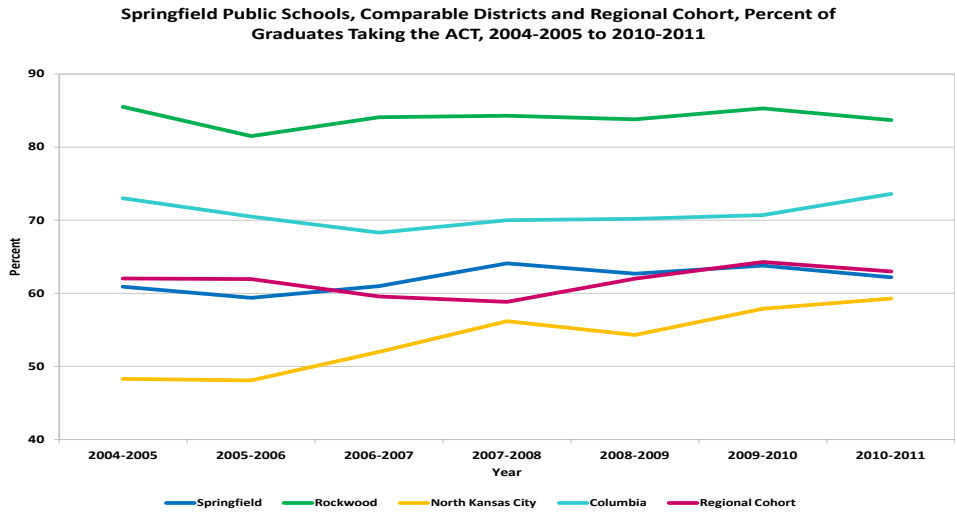


Source: Missouri Department of Elementary & Secondary Education, Springfield Public Schools, Quality Improvement & Accountability

#### Points:

- X-axis represents the school year; Y-axis represents the average ACT Composite Score.
- Springfield's 2010-2011 Composite average was up 0.4 from 2009-2010 (22.5 to 22.9).
- Springfield's performance ranks third of the organizational units presented, lower than Rockwood and Columbia but higher than the Regional Cohort and North Kansas City.
- The percent of graduates taking the ACT for Springfield and the other organizational units are presented in Figure 8.

Figure 8: Springfield Public Schools, Comparable Districts, and Regional Cohort, Percent of Graduates Taking the ACT, 2004-2005 to 2010-2011



- The ACT Composite comparable performance has been identified as a highlight for the Springfield R-XII school district.

NOTE TO THE READER:

More ACT results for the class of 2011, including building level results for the composite and subject area breakdowns as well as a ten year perspective on district, state, and national scores, are available by following the link below.

<http://springfieldpublicschoolsno.org/accountability/documents/SpringfieldACTReport2011.pdf>

**SP5 TARGET**

4.1.1 Springfield Public School ACT composite score will be above state and national averages.

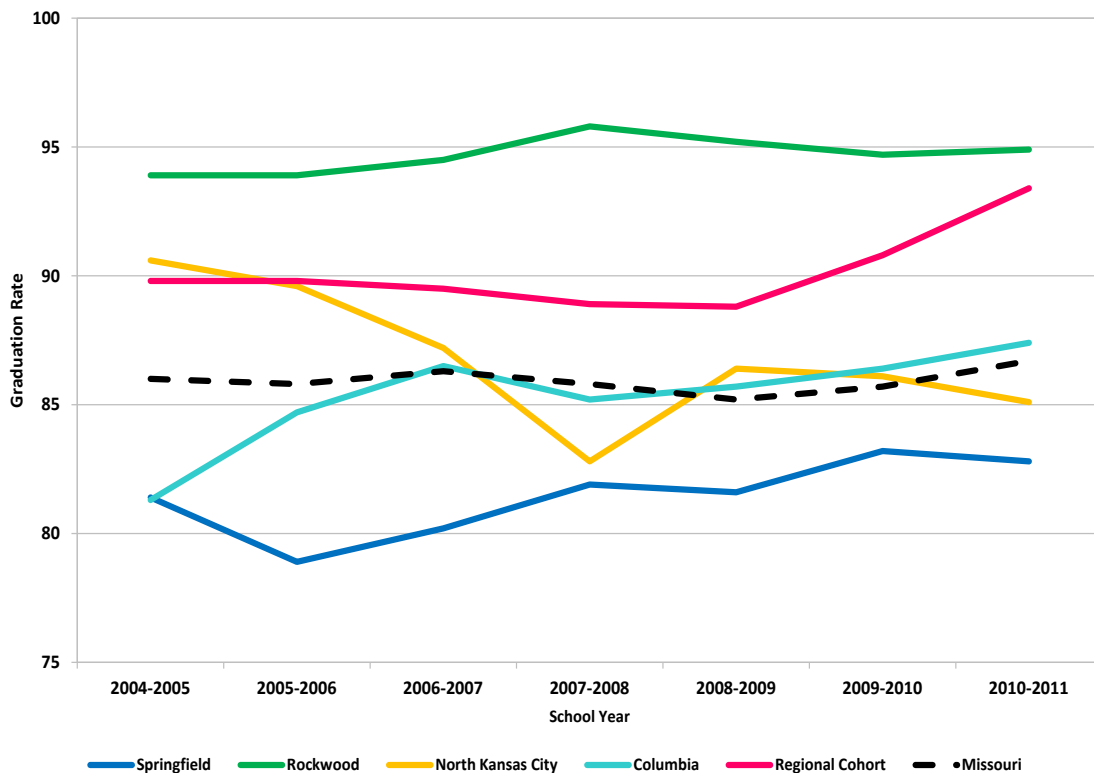
*This target has been met.*

# Goal 2: Improve Graduation Rate

1. Improve Graduation Rate as Measured by MSIP Standard 9.5

1. Percent of Students Persisting to Graduation

**Springfield Public Schools, Comparable Districts & Regional Cohort,  
Graduation Rate, 2004-2005 to 2010-2011,**



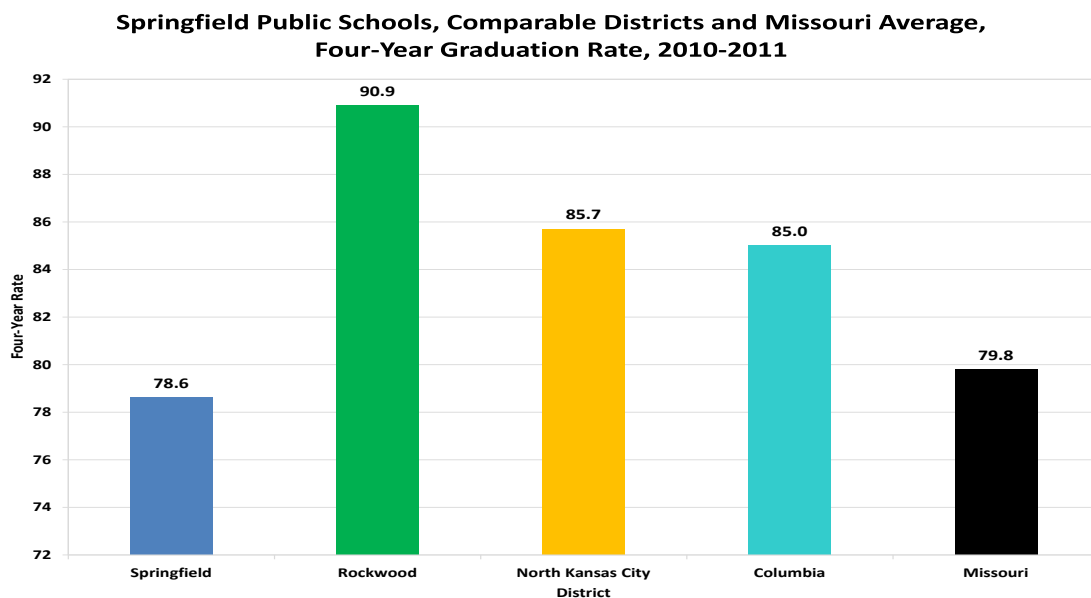
Source: Missouri Department of Elementary & Secondary Education

Points:

- X-axis represents the school year; Y-axis represents the graduation rate.
- Springfield's 2010-2011 rate was 82.8%, down 0.4 from 2009-2010 (83.2) and ranks fifth of the five organizational units presented.
- In the fall of 2011, the Missouri Department of Elementary and Secondary Education released a new four-year graduation rate.

- According to the Missouri Department of Elementary and Secondary Education (<http://dese.mo.gov/four-year-grad-rate.html>),
  - A new method for calculating high school graduation rates will allow—for the first time—rates to be uniformly compared across states beginning with the 2010-2011 school year.
  - In October, 2008, the U.S. Department of Education amended the federal No Child Left Behind regulations to include requirements for calculating a four-year adjusted cohort graduation rate at the state, district, and high school levels.
  - *The new high school graduation rate requires all states to report the percentage of freshmen students who graduate in four years with a regular high school diploma.*
  - From the beginning of ninth grade, students who are entering that grade for the first time form a cohort that is subsequently “adjusted” by adding any students who transfer into the cohort later during ninth grade and the next three years, and subtracting any students who transfer out.
  - The new and current calculations are based on different cohorts: the current graduation rate determines its cohort when a student graduates, which includes students who take more than four years to graduate from high school; the new graduation rate determines its cohort when the student first enters the ninth grade.
  - For now, Missouri’s new four-year adjusted cohort graduation rate will be reported in addition to its current graduation rate.
- Figure 9 presents the four-year graduation rate for Springfield Public Schools and the Comparable Districts.

Figure 9: Springfield Public Schools, Comparable Districts and Missouri Average, Four-Year Graduation Rate, 2010-2011



- The graduation rate has previously been identified as an opportunity for improvement and remains so for the Springfield R-XII school district.

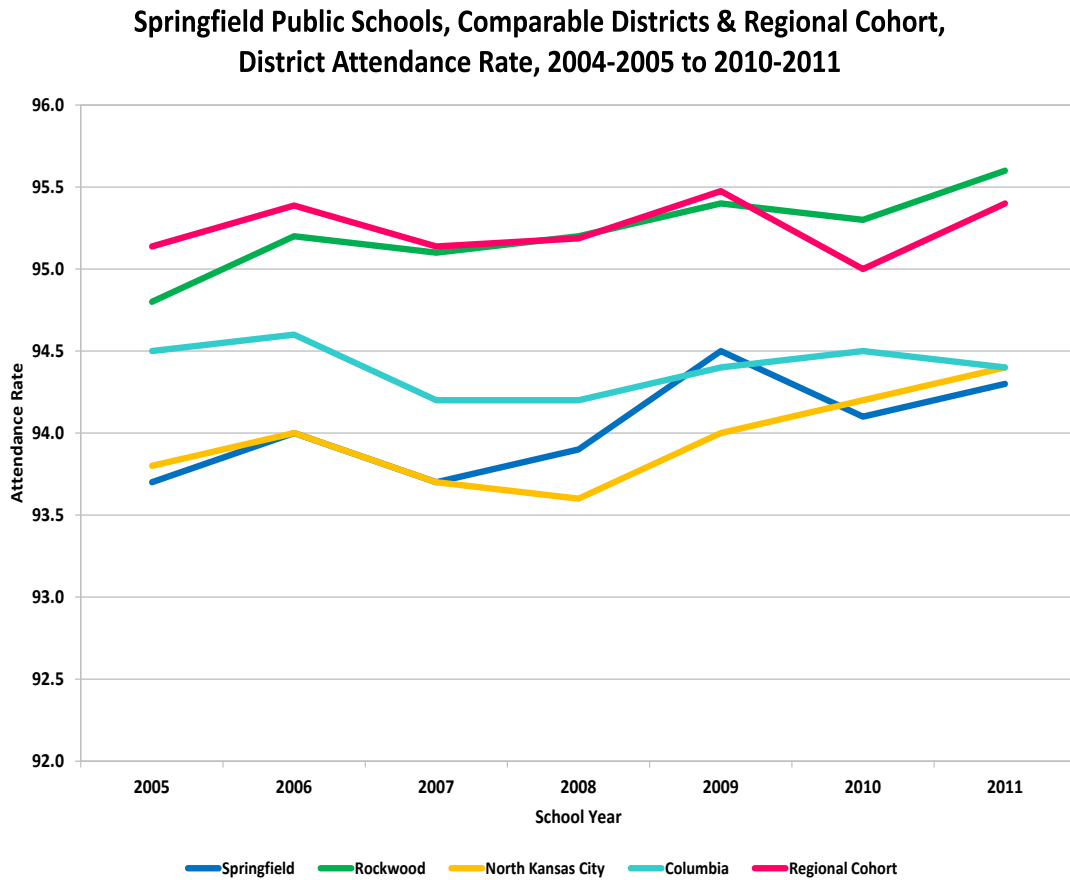
SP5 TARGET

1.1.2 Improve the graduation rate to 84.0 percent for the class of 2011.

*The target was not met.*

## 4. Increase Student Attendance

### 1. District Attendance Rate

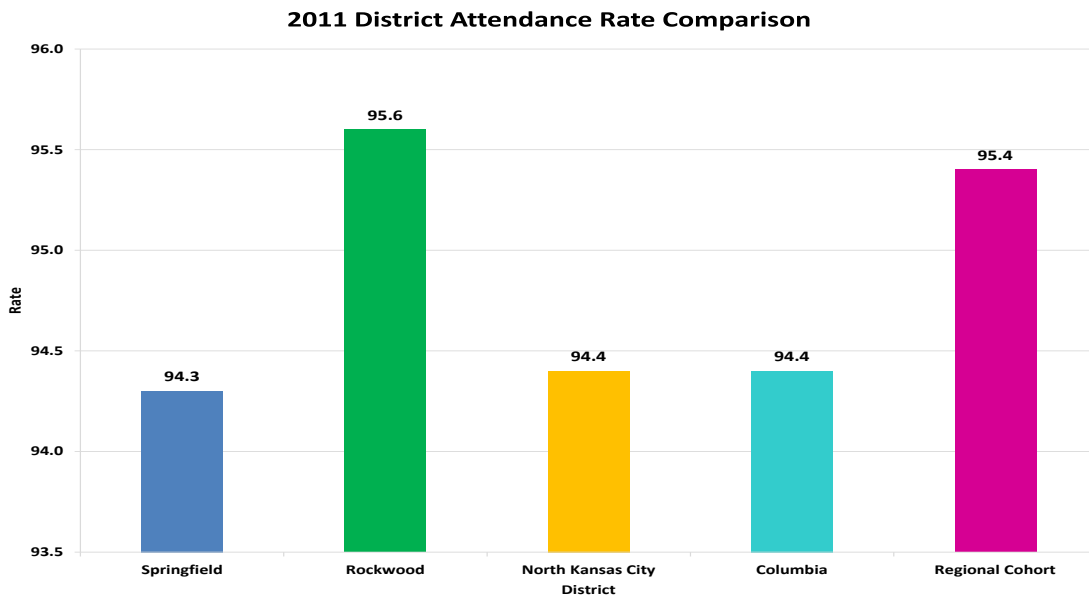


Source: Missouri Department of Elementary & Secondary Education

#### Points:

- X-axis represents the school year; Y-axis represents the district attendance rate.
- Springfield's 2010-2011 overall rate is lower than all the other organizational units presented, but comparable to North Kansas City and Columbia.
- Figure 10 presents the data for the 2010-2011 school year for each unit with the values displayed.

Figure 10: 2011 District Attendance Rate Comparison



- Further disaggregation of the attendance rate by level (K-8 and 9-12) for the 2010-2011 school year are presented in Figures 11 and 12.

Figure 11: Springfield Public Schools, Comparable Districts, and Regional Cohort, District K-8 Attendance Rate, 2004-2005 to 2010-2011

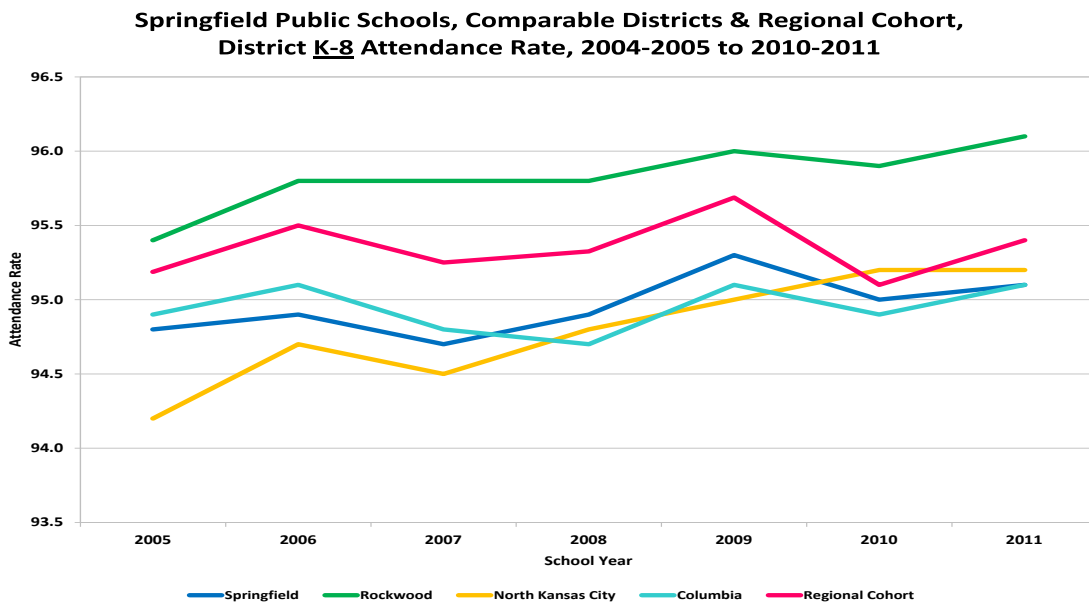
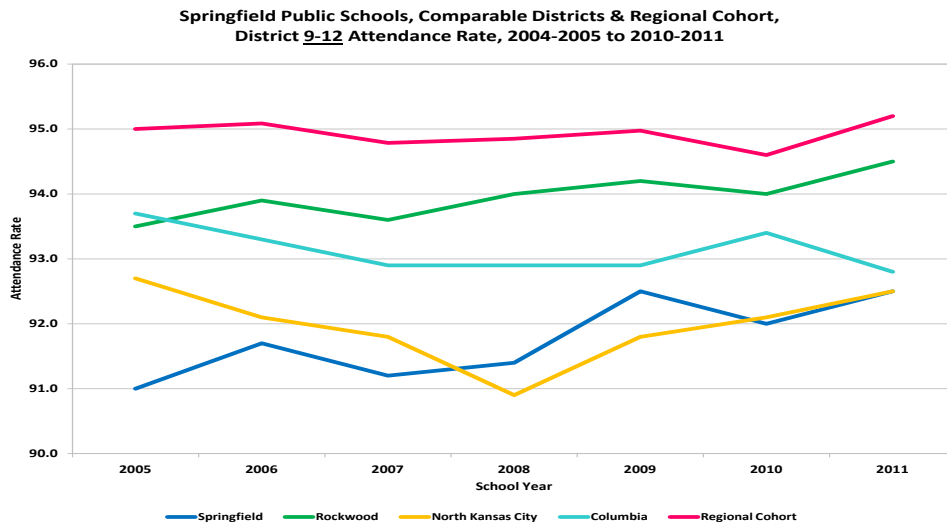


Figure 12: Springfield Public Schools, Comparable Districts, and Regional Cohort, District 9-12 Attendance Rate, 2004-2005 to 2010-2011



- The attendance rate has been identified as an opportunity for improvement for the Springfield R-XII school district.

**SP5 TARGET**

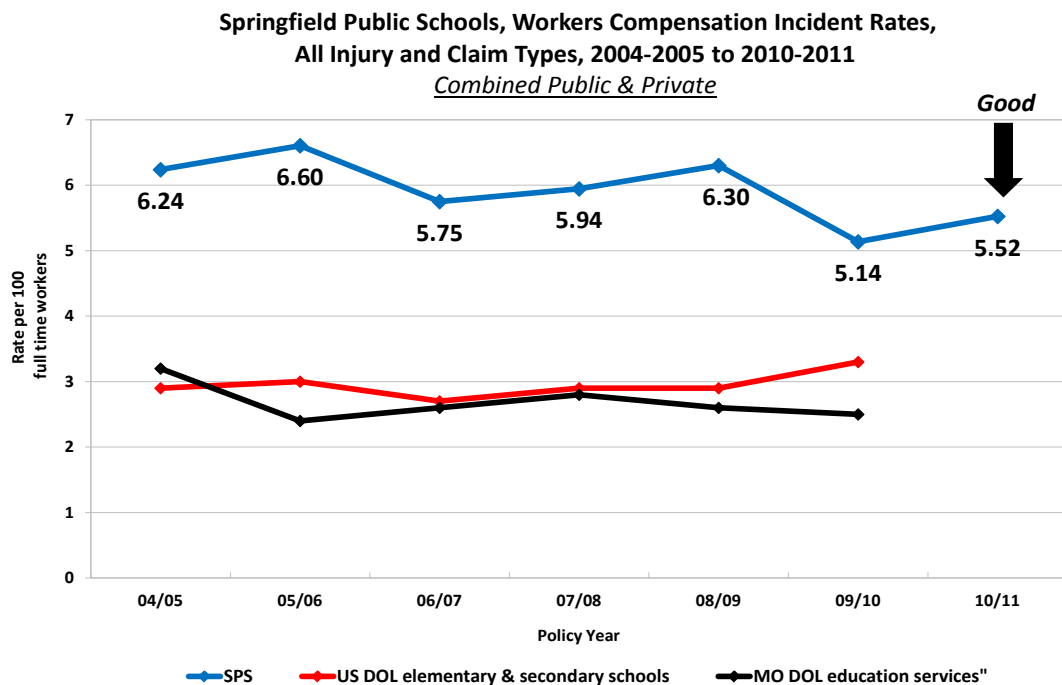
4.1.1 To improve the percent of students who demonstrate regular school attendance to 95 percent by 2013.

*This target was not met.*

# Goal 3: Ensure Effective and Efficient Use of Resources

## 2. Ensure a Safe and Nurturing Environment for Learning

### 1. Percent of Lost Work Time (Workers Compensation Claims)

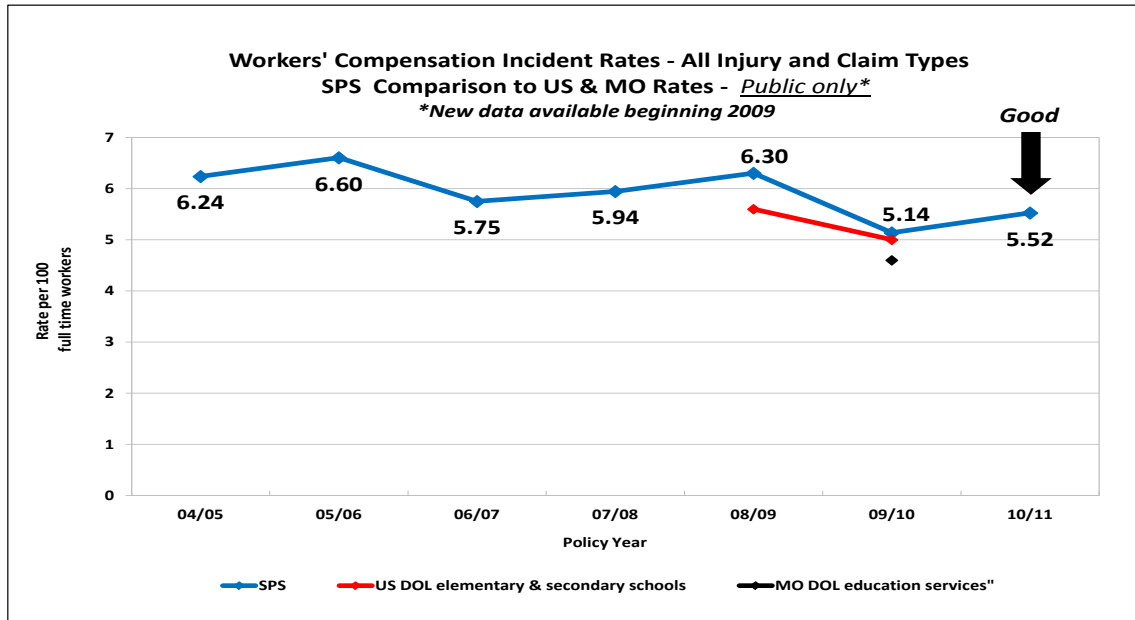


Source: Springfield Public Schools, Risk Management

#### Points:

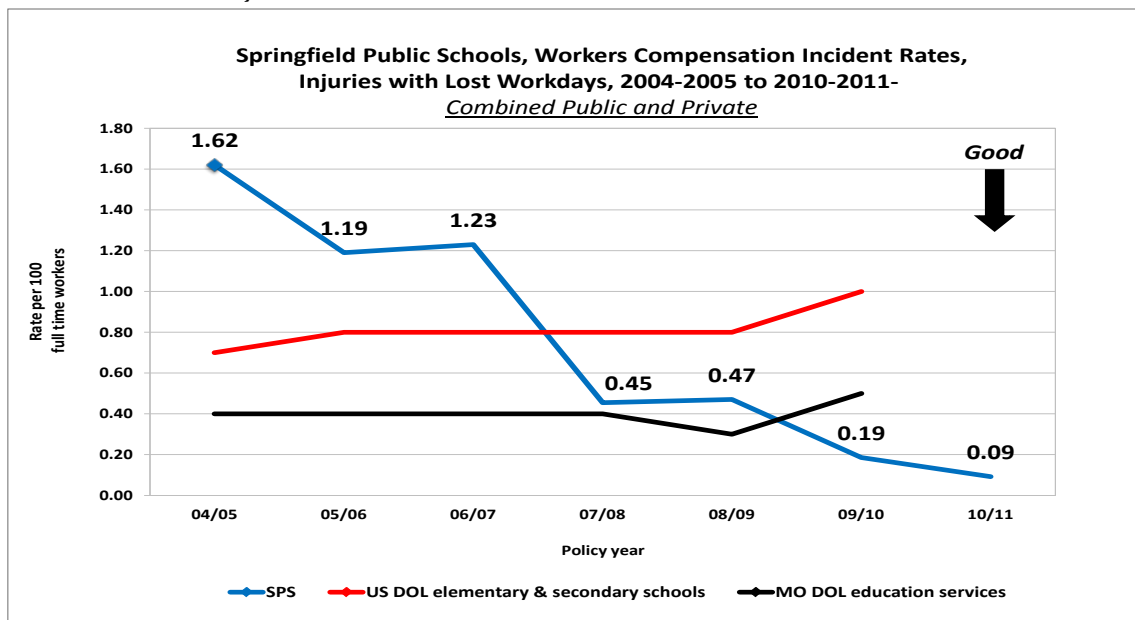
- X-axis represents the school year; Y-axis represents the workers compensation incident rate per 100 full time workers.
- Springfield's performance remains higher than the U.S. and Missouri Department of Labor rates for education related institutions.
- Figure 13 presents data similar to the Performance Measure above, with the exception that this figure represents, "Public Only" organizations.

Figure 13: Workers' Compensation Incident Rates—All Injury and Claim Types SPS Comparison to US & MO Rates—Public Only



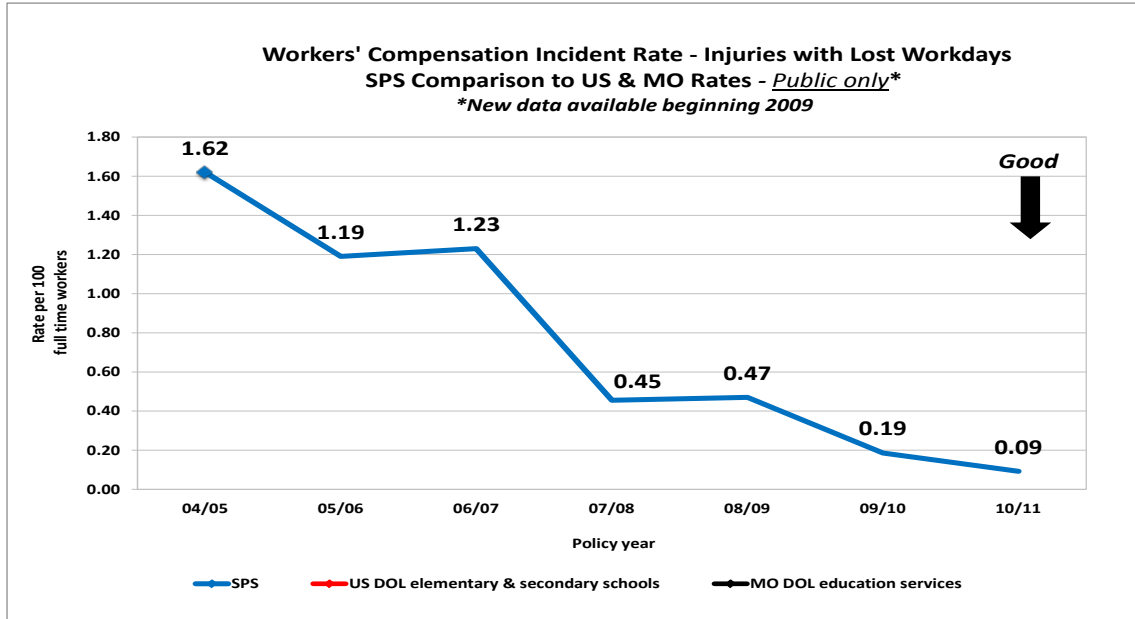
- Figure 14 presents the injuries with lost workdays relating to workers compensation.

Figure 14: Springfield Public Schools, Workers Compensation Incident Rates, Injuries with Lost Workdays, 2004-2005 to 2010-2011



- Figure 15 presents data similar to the Figure 14 (previously), with the exception that this figure represents, “Public Only” organizations.

Figure 15: Workers’ Compensation Incident Rate—Injuries with Lost Workdays SPS Comparison to US & MO Rates—Public Only



- The workers compensation incident rate and injuries with lost workdays has been identified as an update for the Springfield R-XII school district.

**SP5 TARGET**

2.2.1 Workers compensation incident rates for all injury types at or below 5 per 100 employees.

*Progress has been made toward this goal but the target has not been met.*

**Strengths, Opportunities for Improvement, Areas Needing Further Study, and Updates  
Identified by the Springfield R-XII School District for the 2011-2012 School Year**

	<b>Strengths</b>	<b>Opportunities for Improvement</b>	<b>Areas Needing Further Study</b>	<b>Updates &amp; Highlights</b>
<b>1<sup>st</sup> Quarterly Report</b>	<ul style="list-style-type: none"> <li>Percent of Staff Retained</li> </ul>	<ul style="list-style-type: none"> <li>Math, percent of students scoring proficient/advanced, Comparable Performance</li> </ul>		<ul style="list-style-type: none"> <li>CA, percent of students scoring proficient/advanced, Comparable Performance</li> <li>Science, percent of students scoring proficient/advanced, Comparable Performance</li> </ul>
<b>2<sup>nd</sup> Quarterly Report</b>	<ul style="list-style-type: none"> <li>ACT English, Reading, Math, Science, Comparable Performance</li> </ul>	<ul style="list-style-type: none"> <li>Graduation Rate, Comparable Performance</li> <li>Attendance Rate, Comparable Performance</li> </ul>		<ul style="list-style-type: none"> <li>CA, Performance Series, Cohort Results</li> <li>ACT Composite, Comparable Performance</li> <li>Workers Compensation Incident Rates, Injuries with Lost Work Days</li> </ul>

**Strengths, Opportunities for Improvement, Areas Needing Further Study, and Updates  
Identified by the Springfield R-XII School District for the 2010-2011 School Year**

	<b>Strengths</b>	<b>Opportunities for Improvement</b>	<b>Areas Needing Further Study</b>	<b>Updates &amp; Highlights</b>
<b>1<sup>st</sup> Quarterly Report</b>	<ul style="list-style-type: none"> <li>Math, Percent of students scoring proficient/advanced, Comparable Performance</li> </ul>	<ul style="list-style-type: none"> <li>CA, English II End of Course assessment, Comparable Performance</li> <li>Science, Percent of students scoring proficient/advanced, Comparable Performance</li> </ul>		<ul style="list-style-type: none"> <li>CA, Percent of students scoring proficient/advanced</li> <li>Math, Algebra I End of Course Assessment</li> </ul>
<b>2<sup>nd</sup> Quarterly Report</b>	<ul style="list-style-type: none"> <li>ACT, Comparable Performance: Composite, English, Reading, Math, Science</li> </ul>	<ul style="list-style-type: none"> <li>Graduation Rate, Comparable Performance</li> <li>Attendance Rate, Comparable Performance</li> </ul>	<ul style="list-style-type: none"> <li>Performance Series Cohort Performance, Language Arts/ Reading Gap</li> <li>ACT Reading</li> </ul>	<ul style="list-style-type: none"> <li>Performance Series Baseline Results, Placement Indicators for Language Arts, Reading, and Math</li> <li>Performance Series Cohort Results for Language Arts, Reading, and Math</li> <li>Workers Compensation Incident Rates, Injuries with Lost Work Days</li> </ul>
<b>3<sup>rd</sup> Quarterly Report</b>	<ul style="list-style-type: none"> <li>Percent of Students Engaged in Choice Offerings</li> </ul>		<ul style="list-style-type: none"> <li>Percent of Students Meeting College Readiness Benchmark by Content Area, ACT</li> </ul>	<ul style="list-style-type: none"> <li>Gains by Quartile and Expected Amounts, Language Arts, Reading, and Math</li> </ul>

Strengths, Opportunities for Improvement, Areas Needing Further Study, and Updates  
 Identified by the Springfield R-XII School District for the 2010-2011 School Year  
 (Continued)

	Strengths	Opportunities for Improvement	Areas Needing Further Study	Updates & Highlights
4 <sup>th</sup> Quarterly Report	<ul style="list-style-type: none"> <li>• Student Enthusiasm for Learning</li> <li>• Student Perceptions of Environment</li> <li>• Faculty Perceptions of the Environment</li> <li>• Teacher Satisfaction with Job</li> </ul>			<ul style="list-style-type: none"> <li>• Gains by Quartile (Language Arts, Reading, and Math)</li> <li>• Student to Classroom Teacher Ratio</li> </ul>

**Strengths, Opportunities for Improvement, Areas Needing Further Study, and Updates  
Identified by the Springfield R-XII School District for the 2009-2010 School Year**

	<b>Strengths</b>	<b>Opportunities for Improvement</b>	<b>Areas Needing Further Study</b>	<b>Updates &amp; Highlights</b>
<b>1<sup>st</sup> Quarterly Report</b>	<ul style="list-style-type: none"> <li>• CA, Percent of students scoring proficient/advanced, Comparable Performance</li> <li>• Math, Percent of students scoring proficient/advanced, Comparable Performance</li> <li>• Math, Algebra I EOC, Comparable Performance</li> <li>• Math, Comparable Subgroup Performance</li> </ul>	<ul style="list-style-type: none"> <li>• CA, Comparable Performance on End-of-Course Assessment</li> <li>• Science, Percent of students scoring proficient/advanced, Comparable Performance &amp; End-of-Course Assessment</li> </ul>		<ul style="list-style-type: none"> <li>• CA, Percent of students scoring proficient/advanced</li> <li>• CA, Comparable Subgroup Performance</li> <li>• Math, Percent of students scoring proficient/advanced</li> <li>• Math, Comparable Subgroup Performance</li> <li>• Workers Compensation Incident Rate and Injuries with Lost Work Days</li> </ul>
<b>2<sup>nd</sup> Quarterly Report</b>	<ul style="list-style-type: none"> <li>• ACT Composite, Comparable Performance</li> <li>• Attendance Rate, Comparable Performance</li> </ul>	<ul style="list-style-type: none"> <li>• Graduation Rate, Comparable Performance</li> </ul>		<ul style="list-style-type: none"> <li>• Performance Series Math &amp; CA Baseline</li> <li>• ACT math, reading, and English</li> </ul>
<b>3<sup>rd</sup> Quarterly Report</b>	<ul style="list-style-type: none"> <li>• SPS, Schools of Choice</li> </ul>			<ul style="list-style-type: none"> <li>• Performance Series Math &amp; CA Middle-of-Year</li> <li>• Percent of Students Participating in Career/Technical Programs</li> </ul>

Strengths, Opportunities for Improvement, Areas Needing Further Study, and Updates  
 Identified by the Springfield R-XII School District for the 2009-2010 School Year  
 (Continued)

	Strengths	Opportunities for Improvement	Areas Needing Further Study	Updates & Highlights
4 <sup>th</sup> Quarterly Report	<ul style="list-style-type: none"> <li>• Student Enthusiasm for Learning</li> <li>• Teacher Satisfaction with Job</li> <li>• Staff Retained</li> <li>• Faculty Perceptions of Environment</li> <li>• Satisfied Frequent Voters in the Area of District Financial and Bond Management</li> <li>• Community Satisfaction with the District</li> </ul>			<ul style="list-style-type: none"> <li>• Performance Series Math &amp; CA End of Year</li> <li>• Student to Classroom Teacher Ratio</li> <li>• Student Perceptions of Environment</li> </ul>

**Strengths, Opportunities for Improvement, Areas Needing Further Study, and Updates  
Identified by the Springfield R-XII School District for the 2008-2009 School Year**

	<b>Strengths</b>	<b>Opportunities for Improvement</b>	<b>Areas Needing Further Study</b>	<b>Updates &amp; Highlights</b>
<b>1<sup>st</sup> Quarterly Report</b>	<ul style="list-style-type: none"> <li>• Comparative % of Schools Making AYP across the District</li> <li>• Comparative Subgroup Comm. Arts Performance (African-American and Free/Reduced Lunch)</li> <li>• Number of Subgroups Meeting AYP (Math)</li> <li>• Comparative Subgroup Math Performance (African-American, Hispanic, Free/Reduced Lunch, IEP)</li> </ul>	<ul style="list-style-type: none"> <li>• Number of Schools Not Making AYP</li> <li>• Comparative Subgroup Comm. Arts Performance (LEP)</li> </ul>		<ul style="list-style-type: none"> <li>• Number of Subgroups Meeting AYP Math (LEP)</li> <li>• Workers Compensation (Lost Workdays)</li> <li>• Boundary Review Process</li> </ul>
<b>2<sup>nd</sup> Quarterly Report</b>	<ul style="list-style-type: none"> <li>• ACT Composite Score</li> <li>• Graduation Rate (improvement)</li> </ul>	<ul style="list-style-type: none"> <li>• Graduation Rate (comparable performance)</li> <li>• Attendance Rate (comparable performance)</li> </ul>	<ul style="list-style-type: none"> <li>• SRI Beginning-of-Year Performance (previously identified in 4QR0708)</li> </ul>	

(Continued)

Strengths, Opportunities for Improvement, Areas Needing Further Study, and Updates Identified by the Springfield R-XII School District for the 2008-2009 School Year

	Strengths	Opportunities for Improvement	Areas Needing Further Study	Updates & Highlights
3 <sup>rd</sup> Quarterly Report		<ul style="list-style-type: none"><li>• Student to Classroom Teacher Ratio</li></ul>		<ul style="list-style-type: none"><li>• Percent of Students Participating in Choice Offerings</li><li>• Percent of Students Participating in Career &amp; Technical Programs</li><li>• Attendance by Month, 2008-2009</li></ul>
4 <sup>th</sup> Quarterly Report	<ul style="list-style-type: none"><li>• Teacher Satisfaction with Job</li><li>• Faculty Perception of Environment</li><li>• Satisfied Frequent Voters in the Area of District Financial and Bond Management</li><li>• Community Satisfaction with the District</li><li>• Percent of Schools with Air Conditioning</li></ul>			<ul style="list-style-type: none"><li>• Performance Series (Baseline Data)</li><li>• Average Class Size/ Student to Classroom Teacher Ratio</li><li>• Student Attendance</li></ul>

**Strengths, Opportunities for Improvement, Areas Needing Further Study, and Updates  
Identified by the Springfield R-XII School District for the 2007-2008 School Year**

	<b>Strengths</b>	<b>Opportunities for Improvement</b>	<b>Areas Needing Further Study</b>	<b>Updates &amp; Highlights</b>
<b>1<sup>st</sup> Quarterly Report</b>	<ul style="list-style-type: none"> <li>• Comparative % of Schools Making AYP across the District</li> <li>• Comparative Subgroup Performance</li> </ul>	<ul style="list-style-type: none"> <li>• Subgroup AYP Performance</li> <li>• Communication related to the perceptions of salaries</li> </ul>	<ul style="list-style-type: none"> <li>• Algebra and Reading Fiction and Nonfiction Standard Performance</li> </ul>	<ul style="list-style-type: none"> <li>• Graduation Rate</li> <li>• Teacher Salary Comparison</li> <li>• Frequent Voter Survey, Bond Issue Projects</li> </ul>
<b>2<sup>nd</sup> Quarterly Report</b>		<ul style="list-style-type: none"> <li>• Beginning-of-Year SRI</li> <li>• Student to Classroom Teacher Ratio</li> <li>• District Attendance</li> </ul>		<ul style="list-style-type: none"> <li>• Demographics for Comparable Districts</li> <li>• ACT, Composite &amp; Percent of Graduates Taking</li> </ul>
<b>3<sup>rd</sup> Quarterly Report</b>	<ul style="list-style-type: none"> <li>• Beginning-of-Year Star Math, Grades 3 &amp; 7</li> <li>• Beginning-of-Year DRA, Grade 1</li> <li>• Per Pupil Instructional Spending</li> </ul>			<ul style="list-style-type: none"> <li>• Number of Combination Classrooms at the Elementary Level</li> </ul>
<b>4<sup>th</sup> Quarterly Report</b>	<ul style="list-style-type: none"> <li>• Implementation of Student Centered Practices</li> </ul>		<ul style="list-style-type: none"> <li>• SRI and Star Math Beginning and End of Year Performance</li> </ul>	<ul style="list-style-type: none"> <li>• Percent of Community Members Satisfied with Overall District Performance</li> <li>• Percent of Stakeholders Utilizing District Information Sources</li> <li>• Percent of Community Members Indicating the District Welcomes Citizen Involvement</li> </ul>

**Strengths, Opportunities for Improvements, Areas Needing Further Study, and Updates  
Identified by the Springfield R-XII School District for the 2006-2007 School Year**

	<b>Strengths</b>	<b>Opportunities for Improvement</b>	<b>Areas Needing Further Study</b>
<b>1<sup>st</sup> Quarterly Report</b>	<ul style="list-style-type: none"> <li>• Math AYP by Subgroups (MAP)</li> <li>• Upward trends by grade level for communication arts and math (MAP)</li> <li>• ACT Composite</li> <li>• Content Standard performance above state average (MAP) for Algebra and Reading Standards</li> <li>• Community Satisfaction with School District</li> </ul>	<ul style="list-style-type: none"> <li>• Graduation Rate</li> <li>• Student Enthusiasm for Learning                             <ul style="list-style-type: none"> <li>○ Gap between elementary &amp; secondary</li> </ul> </li> <li>• Parent Satisfaction with Facilities and Community Financial Support</li> </ul>	
<b>2<sup>nd</sup> Quarterly Report</b>	<ul style="list-style-type: none"> <li>• Performance of Free/ Reduced Lunch Subgroup on 7<sup>th</sup> grade communication arts and 8<sup>th</sup> grade math (MAP)</li> <li>• Teacher Satisfaction with Professional Development</li> <li>• Principal Satisfaction with Custodial/ Maintenance</li> </ul>	<ul style="list-style-type: none"> <li>• Explore Test Performance by Subgroup</li> <li>• Plan Test Performance by Subgroup</li> </ul>	
<b>3<sup>rd</sup> Quarterly Report</b>	<ul style="list-style-type: none"> <li>• SRI, Number of Students by Level</li> <li>• Instructional Practices Index Average</li> </ul>	<ul style="list-style-type: none"> <li>• SRI, Number of Students by Level</li> <li>• Teacher Salary Rank</li> <li>• Workers Compensation Claims</li> </ul>	<ul style="list-style-type: none"> <li>• Percent of Students not Receiving ISS/OSS</li> </ul>